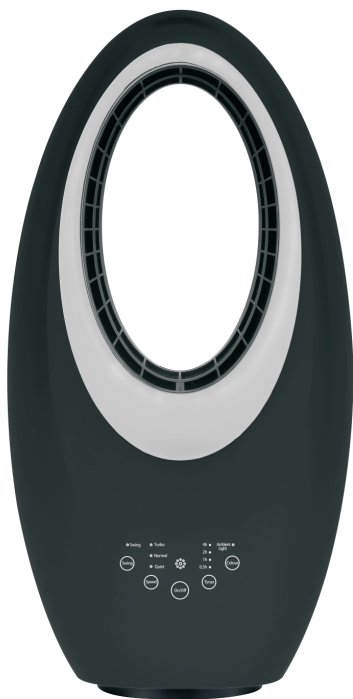


# electriciQ

## USER MANUAL

eiQ-AM07B

BLADELESS FAN WITH AMBIENT LIGHT



Thank you for choosing ElectriciQ

Please read this user manual before using this air circulator and keep it safe for future reference.

Visit our page [www.electriQ.co.uk](http://www.electriQ.co.uk) for our entire range of Intelligent Electricals

# CONTENTS

<b>SAFETY INSTRUCTIONS</b>	<b>3</b>
<b>FEATURES</b>	<b>5</b>
<b>DIAGRAM</b>	<b>5</b>
<b>OPERATION</b>	<b>6</b>
<b>CONTROL PANEL AND SETTINGS</b>	<b>6</b>
<b>REMOTE CONTROL</b>	<b>7</b>
<b>MAINTENANCE</b>	<b>8</b>
<b>TROUBLE SHOOTING</b>	<b>8</b>
<b>APPENDIX</b>	<b>8</b>

## **SAFETY INSTRUCTIONS**

### **Important!**

- Carefully read the instructions before operating the unit
- This appliance is for indoor use only.
- Rating: This unit must be only connected to a 220-240 V / 50 Hz earthed outlet.
- Installation must be in accordance with regulations of the country where the unit is used.
- If you are in any doubt about the suitability of your electrical supply have it checked and, if necessary, modified by a qualified electrician.
- This fan has been tested and is safe to use. However, as with any electrical appliance - use it with care.
- Disconnect the power from the unit before dismantling, assembling or cleaning the unit.
- Avoid touching any moving parts of the appliance.
- Never insert fingers, pencils or any other objects though the guard
- This appliance can be used by children aged from 8 years and above and persons with reduced physical, sensory or mental capabilities or lack of experience and knowledge if they have been given supervision or instruction concerning use of the appliance in a safe way and understand the hazards involved. Children shall not play with the appliance. Cleaning and user maintenance shall not be made by children without supervision.
- Do not clean the unit by spraying it or immersing it in water.
- Never connect the unit to an electrical outlet using an extension cord. If an outlet is not available, one should be installed by a qualified electrician.
- Never operate this appliance if the unit, cord or plug is damaged. Ensure the power cord is not stretched, exposed to sharp object/edges, or routed under the unit.
- Only use the supplied power adaptor. Should it require replacement, only use a genuine adaptor recommended by the manufacturer.
- Any service other than regular cleaning should be performed by an authorized service representative. Failure to comply could result in a voided warranty.
- Do not use the appliance for any purpose other than for its intended use.
- Never use the plug as a switch to start and turn off the fan. Use the provided power button located on the control panel.
- Always place the unit on a dry and stable surface. Do not move or tilt the unit
- High Velocity fans are designed to create rapid air movement, therefore make sure the fan is not placed near curtains or any objects that may be drawn into the fan inlet.
- The appliance should not be installed in laundry or wet rooms

- Do not use this unit in environments with flammable and explosive gases.
- Avoid keeping the unit in direct sunlight for a long period of time
- The remote contains a lithium battery, keep out of reach of small children. Seek Medical advice if swallowed.
- Remove the battery from the remote before storage, or if exhausted to prevent leakage.

#### **Energy Saving and Unit Safety Protection Tips**

- Do not cover or restrict the airflow. Do not use in dusty environment.
- For maximum performance the minimum distance from a wall or objects should be 50cm.

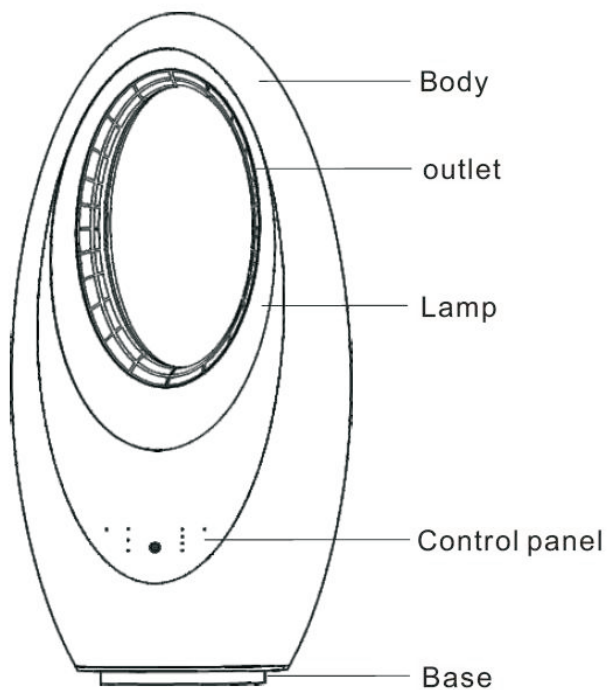
**Warning:** To reduce the risk of fire or electrical shock, DO NOT USE THIS FAN with any SOLID STATE Speed Control Device or any variable speed controllers.

## eiQ-AM07B BLADELESS FAN

### FEATURES

- Slim design takes minimal space
- High Speed Motor with 3 Fan Speed Settings
- Swing Function
- 7.5 hour standby timer.
- Remote Control allowing all functions to be changed.
- Built in ambient light.

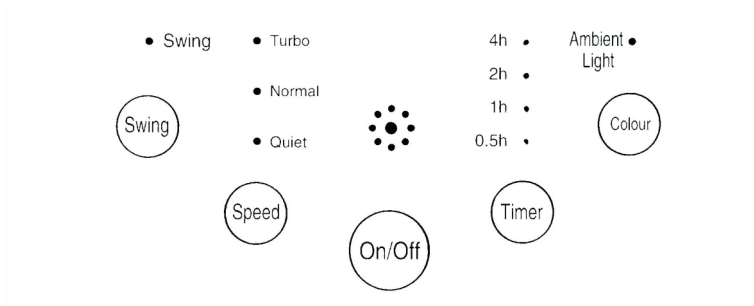
### DIAGRAM



## OPERATION

Your fan may be operated by using either the manual controls located on the front of the fan or by your remote control.

## CONTROL PANEL AND SETTINGS



### 1. ON/OFF BUTTON

Used to turn the bladeless fan ON and OFF.

### 2. SWING BUTTON

Press to turn the Swing function on and off. When it is operational the horizontal direction of the airflow is slowly moved from side to side.

### 3. SPEED BUTTON

Press to cycle through the three available fan speeds. Quiet, Standard, and Turbo.

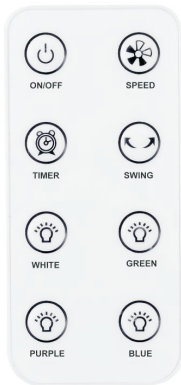
### 4. TIMER BUTTON

Press repeatedly to increase the running time in 30 minute intervals. The timer can be set between 30 minutes and 7.5 hours. Addition of the lights will show the time set. i.e. if the 4h and 1h lights are lit, the timer is set to 5 hours.

### 5. COLOUR BUTTON

Press to cycle through the options for the ambient light – Off, White, Green, Purple or Blue. The light can be operated independently to the fan.

## REMOTE CONTROL



Your bladeless fan is supplied with a remote, which allows full control of all the units functions.

**ON/OFF:** Turns the fan On and Off

**SPEED:** Cycles between the fan speeds – Quiet, Standard and Turbo

**TIMER:** Press repeatedly to set the On timer in 30 minute intervals. The time set will be displayed on the unit.

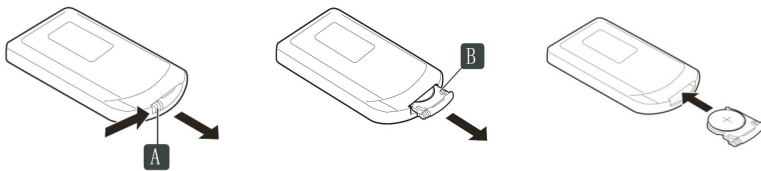
**SWING:** Press to turn the Swing Function On and Off.

**AMBIENT LIGHT BUTTONS – WHITE, GREEN, PURPLE AND BLUE:** Press the appropriate button to turn on the colour of ambient light required. Press the same button again to turn off the ambient light.

## REPLACING THE BATTERIES

The remote control is powered by a Lithium Button Cell Battery (CR2025). Should the remote become unresponsive, replace the battery following the instructions below:

1. Turn over the remote and press tab A to the right.
2. Slide out the battery tray B
3. Replace the battery with the same type, ensuring the positive side is facing upwards.



## MAINTENANCE

### CLEANING AND STORAGE

**ATTENTION:** Please shut off the unit and unplug from the mains before cleaning or performing any maintenance.

#### Cleaning the surface

Clean the fan with a duster or a soft wet cloth.

Do not use chemical solvents (such as benzene, alcohol or gasoline) as they may cause irreversible damage. Make sure no water enters the control panel or fan motor

Do not run the unit until completely dry.

Place the fan in its original box or cover the fan to protect it from dust.

Store it in a cool dry place.

## TROUBLESHOOTING

Do not repair or disassemble the unit by yourself, unauthorized repair attempts will invalidate the warranty and may cause bodily harm.

Issue	Possible Reason	Solution
No power	<ol style="list-style-type: none"><li>1. Power cord is unconnected</li><li>2. There is no power from socket</li><li>3. The power switch is not on.</li></ol>	<ol style="list-style-type: none"><li>1. Connect the power cord</li><li>2. Check socket is turned on</li><li>3. Turn the unit on</li></ol>
Odour emission from unit	<ol style="list-style-type: none"><li>1. New unit. When the unit is used for the first time the fan motor may produce an odour which will dissipate within a week of use</li></ol>	<ol style="list-style-type: none"><li>1. No action required</li></ol>
Strong vibrations and noise	<ol style="list-style-type: none"><li>1. Fan is not used on a flat surface</li><li>2. Fan may be damaged</li></ol>	<ol style="list-style-type: none"><li>1. Place on a flat surface. May put an anti-vibration mat underneath</li><li>2. If fan is damaged discontinue use and contact service centre.</li></ol>

If the above solutions do not resolve the problem please contact the service centre.

## APPENDIX



**Disposal:** Do not dispose this product as unsorted municipal waste. Collection of such waste must be handled separately as special treatment is necessary.

Recycling facilities are now available for all customers at which you can deposit your old electrical products. Customers will be able to take any old electrical equipment to participating civic amenity sites run by their local councils. Please remember that this equipment will be further handled during the recycling process, so please be considerate when depositing your equipment. Please contact the local council for details of your local household waste recycling centres.



## TECHNICAL DATA

<b>Model</b>	<b>eiQ-AM07B</b>
<b>Fan Speeds</b>	3
<b>Cable length</b>	1.7 meters
<b>Rated Input</b>	45Watt
<b>Fan Speed (r/min)</b>	1200
<b>Air Volume</b>	50 m <sup>3</sup> /hr
<b>Power Supply</b>	220-240V/50-60Hz
<b>Net Weight</b>	2.9 kg
<b>Dimensions</b>	571mm x 292mm x 171mm

## ElectriQ UK SUPPORT

[www.ElectriQ.co.uk/support](http://www.ElectriQ.co.uk/support)

Please, for your own convenience, make these simple checks before calling the service line.

If the unit still fails to operate call: 0871 620 1057 or complete the online form

1. Is the unit plugged into the mains?
2. Is the fuse OK?
3. Switch the unit off and wait three minutes to see if the issue is resolved. Restart the unit.

Office hours: 9AM - 5PM Monday to Friday

[www.ElectriQ.co.uk](http://www.ElectriQ.co.uk)

**Unit J6, Lowfields Business Park**

Lowfields Way, Elland  
West Yorkshire, HX5 9DA