

## Solving Minor Problems Yourself

Problem	Possible Causes	Solution
The iron does not work or is not heating up.	Temperature regulator (I) on a very low setting.	Turn the temperature regulator to the desired position.
	Connection problems.	Check that the plug is inserted into the mains socket correctly.
The clothes tend to stick.	Temperature regulator (I) setting is too high.	Turn the temperature regulator to a lower setting.
Water comes out of the soleplate together with steam.	Temperature regulator (I) setting is too low.	Turn the temperature regulator to a higher setting.
	Steam regulator (A) is set too high in conjunction with a low temperature.	Turn the steam regulator to a lower setting.
	You have pressed the shot of steam button (M) repeatedly without waiting for 5 seconds between each press.	Wait 5 seconds between each press of the shot of steam button.
Iron is not steaming.	Tap or part distilled water has not been used (see "Filling the water tank" section) or other products such as fragrant water have been added to the tank.	Mix distilled water with tap water as directed in the „Filling the water tank“ section, and never add any other products to the water tank.
	Steam regulator (A) in "0" or "calc" position.	Turn the steam regulator to "1" or "2" position.
	Scale obstruction of internal components.	Remove the steam regulator (A) and clean it. If this does not help contact an Authorised Technical Service Centre.
	Obstructed mechanism.	Contact an Authorised Technical Service Centre.
Water comes out from the soleplate before plugging the iron in.	The steam regulator (A) is not properly closed.	Place the steam regulator in the "0" position.
Deposits come out through the holes in the soleplate.	Traces of lime scale are coming out of the steam chamber.	Carry out a cleaning cycle " (see "Multiple de-scaling system" section)
The iron begins to smoke when switched on.	During first use: Certain components on the appliance have been lightly greased at the factory and may produce a little smoke when initially heated.	This is completely normal and will stop after a short while.
Flashing lamp on top of handle (*)	Auto-shut off has been activated.	Move the iron gently from side to side to re-start it.

(\*) Model dependent

Thank you for buying the TDA26 steam iron from Bosch.

This iron has been designed according to ecological criteria, related to the sustainable development; analyzing its whole lifecycle, from material selection to its later reusing or recycling; evaluating the improvement possibilities, from a technical, economical and environmental point of view.

Please visit [www.bosch-home.co.uk](http://www.bosch-home.co.uk) for more product information or to register your product, just follow the link to the Online guarantee registration.

Carefully read through the operating instructions for the appliance and safeguard them for future reference.

You can download this manual from the local homepages of Bosch.

## General safety instructions

- The iron must not be left unattended while it is connected to the supply mains.
- Remove the plug from the socket before filling the appliance with water or before pouring out the remaining water after use.
- The appliance must be used and placed on a stable surface.
- When placed on its stand, make sure that the surface on which the stand is placed is stable.
- The iron should not be used if it has been dropped, if there are visible signs of damage or if it is leaking water. It must be checked by an authorized Technical Service Centre before it can be used again.
- With the aim of avoiding dangerous situations, any work or repair that the appliance may need, e.g. replacing a faulty mains cable, must only be carried out by qualified personnel from an Authorised Technical Service Centre.
- This appliance can be used by children aged from 8 years and above and persons with reduced physical, sensory or mental capabilities or lack of experience and knowledge if they have been given supervision or instruction concerning use of the appliance in a safe way and understand the hazards involved. Children shall not play with the appliance. Cleaning and user maintenance shall not be made by children without supervision.

## Customer Service

### Great Britain

Bosch Customer Service  
Grand Union House  
Old Wolverton Road Milton Keynes  
MK12 5PT

UK +44 (0)344 892 8979  
IRL +353 (0)1450 2655

[www.bosch-home.co.uk](http://www.bosch-home.co.uk)

005 TDA26..GB/11/14

- Keep the iron and its cord out of reach of children less than 8 years of age when it is energized or cooling down.

- This appliance is to be connected and used in accordance with the information stated on its characteristics plate.
- This appliance must be connected to an earthed socket. If it is absolutely necessary to use an extension cable, make sure that it is suitable for 16A and has a socket with an earth connection.
- If the safety fuse fitted in the appliance blows, the appliance will be rendered inoperative. To restore normal operation the appliance will have to be taken to an authorised Technical Service Centre.
- In order to avoid that, under unfavourable mains conditions, phenomena like transient voltage drops or lighting fluctuations can happen, it is recommended that the iron is connected to a power supply system with a maximum impedance of 0.27Ω . If necessary, the user can ask the public power supply company for the system impedance at the interface point.
- The appliance must never be placed directly under the tap to fill the water tank.
- Unplug the appliance from the mains supply after each use, or if a fault is suspected.
- The electrical plug must not be removed from the socket by pulling the cable.
- Never immerse the iron in water or any other fluid.
- Do not leave the appliance exposed to weather conditions (rain, sun, frost, etc.)

## TIPS TO HELP YOU SAVE ENERGY

Steam production consumes the most energy. To help minimise the energy used, follow the advice below:

- Regulate the steam according to the selected ironing temperature.
- Try to iron the fabrics while they are still damp and reduce the steam setting. Steam will be generated from the fabrics rather than the iron. If you tumble dry your fabrics before ironing them, set the tumble drier to the 'iron dry' programme.
- Stand the iron upright during pauses. Resting it horizontally with the steam regulator on generates wasted steam.



Register your new Bosch now:  
<http://www.bosch-home.co.uk>



TDA26..



**BOSCH**

en Operating instructions

## CLEANING AND MAINTENANCE

**⚠ ! Attention! Risk of burns!**

Always unplug the appliance from the mains supply before carrying out any cleaning or maintenance operation on it.

- Never decalcify the water tank (E) or treat it with detergents or solvents, otherwise the iron will drip water whilst steaming!
- If the iron is only slightly soiled, allow the soleplate (G) to cool down. Wipe the housing and the soleplate with a damp cotton cloth only.
- If the cloth is synthetic, it may melt due to the high temperature on the soleplate. Switch off the steam and rub off any residue immediately with a thickly folded, damp cotton cloth.
- To keep the soleplate smooth, you should avoid hard contact with metal objects. Never use a scouring pad, or chemicals to clean the soleplate.

## GUARANTEE TERMS

The terms of the guarantee for this appliance are in accordance with that stated by our representative for the country in which it is sold. Details of those conditions can be obtained from the retailer from whom the appliance was purchased. The SALES RECEIPT must be presented when making any claims against the terms of this guarantee. We reserve the right to make technical modifications.

## ENVIRONMENTAL CARE

Before throwing a used appliance away, you should make it noticeably inoperable e.g. cut off the mains lead and be certain to dispose of it in accordance with current laws and regulations.

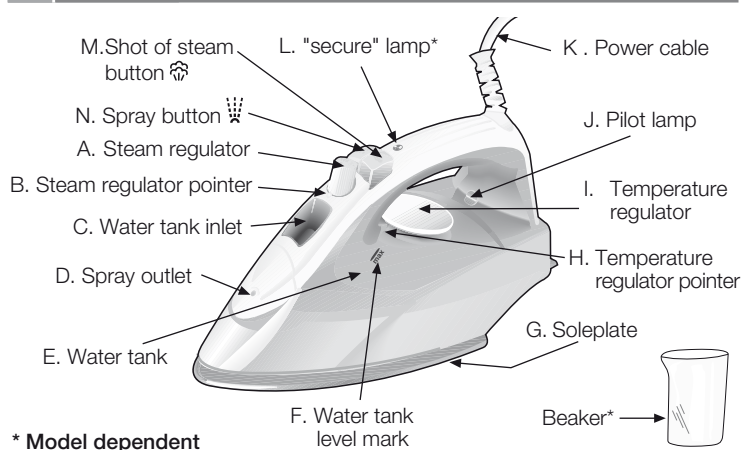
Your retailer, town council or local council can give you detailed information about these.



**This appliance is labelled in accordance with European Directive 2002/96/EG concerning used electrical and electronic appliances (waste electrical and electronic equipment – WEEE).**

**The guideline determines the framework for the return and recycling of used appliances as applicable throughout the EU.**

## 1 Your iron



\* Model dependent

### Before using the for the first time

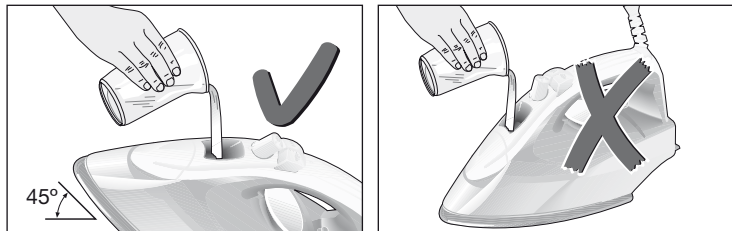
#### Please carry out the following steps:

1. Remove the protective cover from the soleplate before using the iron.
2. While the iron is unplugged, fill the water tank (E) with tap water and set the temperature regulator (I) to "max" by lining it up with the pointer (H).
3. Plug the appliance into the mains and when the iron has reached the correct temperature (the pilot lamp J goes out), set the steam regulator (A) to the "2" position.
4. Hold the iron horizontally and repeatedly press the shot of steam button (M) on the handle repeatedly at intervals of 5 seconds.
5. If necessary, carefully clean the soleplate down with a damp, folded cloth.

## 2 Filling the water tank

Set the steam regulator (A) to the "0" position by lining it up with the pointer (B) on the iron and unplug the iron from the mains!

1. Place the iron at an angle of 45° with the point facing upwards.
2. Fill the water tank (E) via the water tank inlet (C) but never above the "max" mark (F) using the beaker\*.



Use only clean water from the tap and do not mix anything with it. The addition of other liquids, such as perfume, will damage the appliance. Do not use condensation water from tumble dryers, air conditioners or similar appliances. This appliance has been designed to use normal tap water.

To prolong the optimum steam function it is possible to mix tap water with distilled water 1:1. If the tap water in your district is very hard, mix tap water with distilled water 1:2.

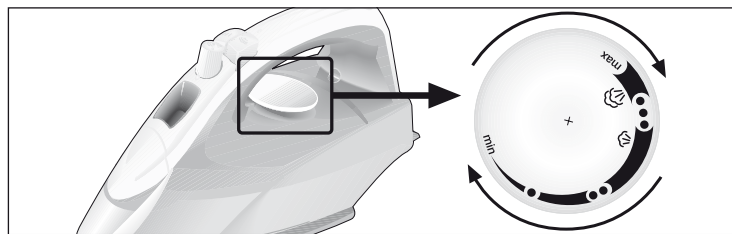
You can inquire about the water hardness with your local water supplier.

## 3 Setting the temperature

The temperature regulator (I) adjusts the temperature of the soleplate (G).

Check the temperature instructions shown on the care label of the garment you are ironing and set the temperature regulator (I) to the corresponding position by lining it up with the temperature regulator pointer (H) on the iron:

Fabric	Temperature Setting
Synthetics	•
Silk - Wool	••
Cotton - Linen	•••



The pilot lamp (J) will stay lit while the iron is heating up and go out once the selected temperature has been reached. Wait for a few seconds after the light goes out before you start ironing. Once the iron is ready, you can continue to iron even if the pilot lamp comes on again.

#### Tips:

1. Sort your garments based on their care labels, always starting with those that have to be ironed at the lowest temperature.
2. For silk, woollen or synthetic materials iron the reverse side of the fabric to prevent shiny patches. Avoid using the spray function to prevent stains.

## 4 Ironing with steam

The steam regulator (A) is used to adjust the amount of steam produced when ironing.

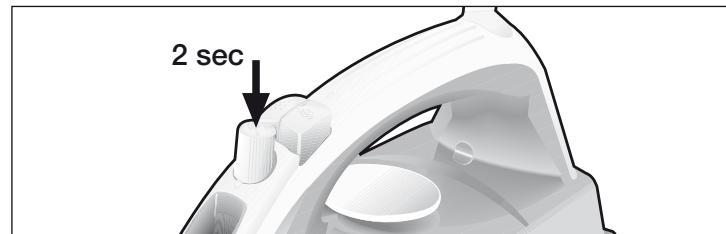
1. Make sure that there is water in the tank (E).
2. Adjust the temperature regulator (I) and then set the steam regulator (A) according to the table below by lining it up with the steam regulator pointer (B). Steam will automatically be produced.

Temperature Setting	Steam Regulator Setting
••• to "max"	2
••	1

**Note:** At a temperature setting of "\*", the soleplate is not hot enough to produce steam, so the steam regulator (A) should be set to the "0" position to avoid water dripping from the soleplate (G).

## 5 Extra steam

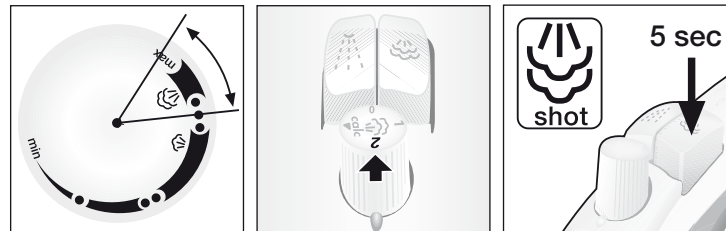
To facilitate the ironing of very creased laundry or thick materials, the volume of steam can be increased briefly. Press and hold the steam regulator (A) for a maximum of 2 seconds.



## 6 Shot of steam

This can be used to remove stubborn wrinkles or to press in a sharp crease or pleat. It cannot be used on a synthetic setting for delicate items.

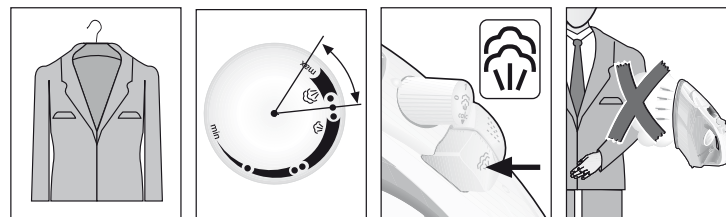
1. Set the temperature regulator (I) to the "•••" or "max" position and the steam regulator (A) to the "2" position.
2. Press the shot of steam button (M) on the handle repeatedly at intervals of 5 seconds.



## 7 Vertical steam

This can be used to remove creases from hanging clothes, curtains etc. It cannot be used on a synthetic setting for delicate items. **WARNING! Do not vertical steam while the item is being worn. Never spray or aim steam at people or animals!**

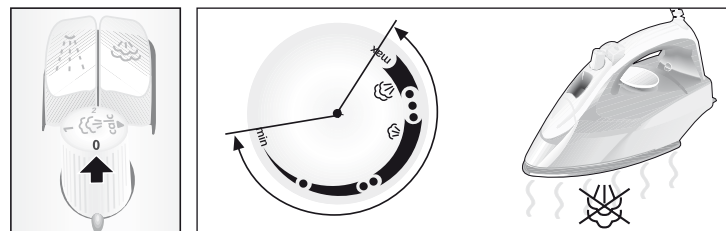
1. Set the temperature regulator (I) to the "•••" or "max" position and the steam regulator (A) to the "2" position.
2. Hold the iron in an upright position about 10 cm / 4 in away from the garment being steamed.
2. Press the shot of steam button (M) on the handle at intervals of 5 seconds. However, after 4 jets of steam, wait for 10 seconds to allow for continued steam production.



## 8 Ironing without steam

This function enables the iron to be used for dry ironing.

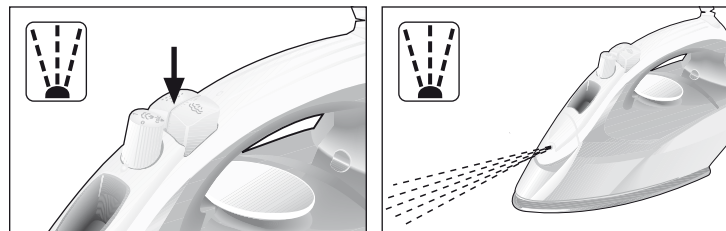
1. Set the steam regulator (A) to the "0" position.
2. Select an appropriate temperature for the type of material being ironed.



## 9 Spray

This can be used to remove stubborn wrinkles.

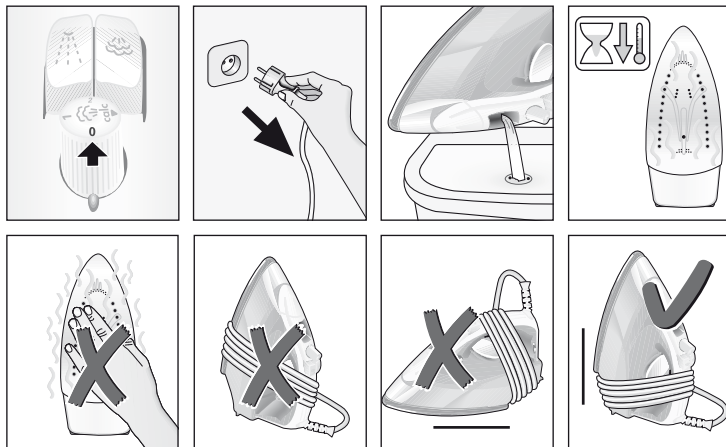
Do not use the spray function with silk as staining may occur.



## 10 After each ironing

Set the steam regulator (A) to "0" and remove the plug!

1. Hold the iron upside down over a sink and shake it gently until all the water has come out from the water tank inlet (C).
2. Set the iron aside in a vertical position to cool down.
3. Coil the power cable (K) loosely around the heel of the iron before storing.
4. Store the iron in an upright position.



## 11 Multiple de-scaling system

Depending on the model, this range is equipped with the "AntiCalc" (component 1 + 2 + 3) descaling system.

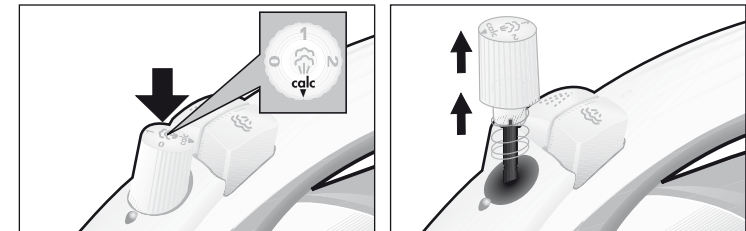
#### A. self-clean

Each time you use the steam regulator (A), the "self-clean" system cleans the mechanism of any scale deposits.

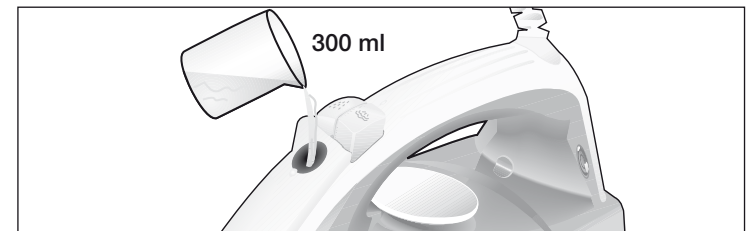
#### B. Calc'nClean

The "Calc'nClean" function helps to remove scale particles out of the steam chamber. Use this function approximately every 2 weeks:

1. Set the temperature regulator (I) to the "max" position and plug in the iron.
2. After the necessary warm-up period (the pilot lamp J goes out), unplug the iron.
3. Hold the iron over a sink and remove the steam regulator (A) by turning it to the "calc" position while pressing it.



4. Slowly pour water (approximately 300 ml) into the steam regulator hole.



5. Gently shake the iron. Boiling water and steam will come out of the soleplate (G), carrying scale or deposits that might be there. When the iron stops dripping, reassemble the steam regulator by reinserting it, lining up the "calc" position with the pointer, pressing it in and turning it to the "0" position.

6. Plug in the iron. Heat up the iron again until the remaining water has evaporated.

#### Tip:

If the steam regulator needle is soiled, remove any deposits from the tip with vinegar and rinse it off with clean water.

#### C. anti-calc

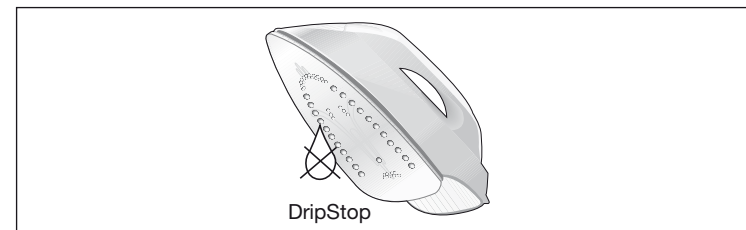
The anti-calc cartridge has been designed to reduce the build-up of scale produced during steam ironing, helping to extend the useful life of your iron. Nevertheless, the "anti-calc" cartridge cannot remove all of the scale that is produced naturally over time.

### Additional Features (Model dependent)

## 12 Anti-drip system

This system will automatically stop the iron producing steam when the selected temperature setting is too low to prevent water from dripping out of the soleplate.

You may hear a clicking sound when this system is in operation.



## 13 Large filling inlet with lid



## 14 "secure" auto shut-off function

The "secure" auto shut-off function switches off the iron when it is left unattended, thus increasing security and saving energy.

1. Plug in the iron.
2. Initial heating up process: this function will be inactive for the first two minutes in order to give the appliance time to reach the set temperature.
3. The safety circuit will switch the appliance off automatically and the indicator lamp (L) will start flashing in the following cases:
  - a If the iron is not moved for 30 seconds while resting on its soleplate (G) or on its side.
  - b If the iron is not moved for 8 minutes while in the upright position.
4. To reconnect the iron, just move it about gently.

