



TASSIMO

CADDY



TAS 75xx

de Gebrauchsanleitung

en Instruction manual

fr Mode d'emploi

es Instrucciones de uso

pt Instruções de serviço

it Istruzioni per l'uso

nl Gebruiksaanwijzing

sv Bruksanvisning

da Brugsanvisning

no Bruksanvisning

el Οδηγίες χρήσης

pl Instrukcja obsługi

cs Návod k použití

sk Návod na použitie

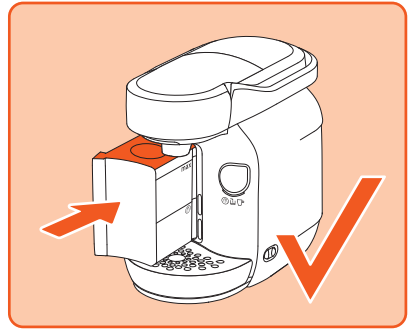
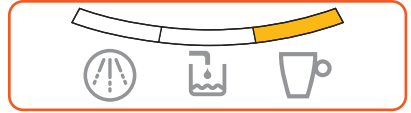
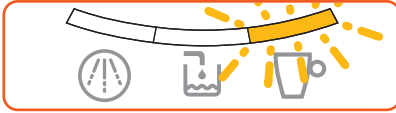
ro Instrucțiuni de utilizare

ru Правила пользования

uk Інструкція з експлуатації



BOSCH





de Integrierter Kapselhalter
en Integrated capsule holder
fr Porte-capsules intégré
es Dispensador de cápsulas integrado
pt Suporte para cápsulas integrado
it Portacapsule integrato
nl Geïntegreerde capsulehouder
sv Inbyggd kapselhållare

da Integreret kapselholder
no Integrert kapselholder
el Ενσωματωμένη βάση καψουλών
pl Zintegrowany uchwył na kapsułki
cs Integrovaný držák kapslí
sk Integrovaný držiak na kapsule
ro Suport pentru capsule integrat
ru Встроенный держатель капсул
uk Інтегрований тримач для капсул



de Inbetriebnahme
en First time use
fr La première utilisation
es Puesta en servicio
pt Primeira utilização
it Messa in funzione
nl Ingebruikneming
sv Idrifftagning
da Ibrugtagning

no Første gangs bruk
el Θέση σε λειτουργία
pl Uruchamianie
cs Uvedení do provozu
sk Uvedenie do prevádzky
ro Prima utilizare
ru Ввод в эксплуатацию
uk Перше використання



de Wasserfiltersystem
en Water filtration system
fr Système de filtration d'eau
es Sistema de filtrado de agua
pt Sistema de filtragem de água
it Sistema di filtraggio acqua
nl Waterfiltersysteem
sv Vattenfiltersystem
da Vandfiltersystem

no Vannfiltreringssystem
el Σύστημα φίλτρου νερού
pl System filtracji wody
cs Systém filtrování vody
sk Systém filtrovania vody
ro Sistemul de filtrare a apei
ru Система фильтрации воды
uk Система фільтрації води



de Getränkezubereitung
en Beverage preparation
fr Préparation de boissons
es Preparación de bebidas
pt Preparação de bebidas
it Preparazione delle bevande
nl Toebereiden van dranken
sv Tillredning av drycker
da Tilberedelse af drikke

no Tilberedning av drikker
el Παρασκευή ροφήματος
pl Przygotowanie napoju
cs Příprava nápojů
sk Príprava nápojov
ro Prepararea băutilor
ru Приготовление напитков
uk Приготування напою



de Entkalken
en Descaling
fr Détartrage
es Descalcificar
pt Descalcificar
it Decalcificare
nl Ontkalken
sv Avkalkning
da Afkalkning

no Avkalking
el Αποσβέστωση
pl Odkamienianie
cs Odstranění vodního kamene
sk Odstránenie vodného kameňa
ro Decalcifierea
ru Удаление накипи
uk Видалення накипу



de Reinigen
en Cleaning
fr Nettoyage
es Limpiar
pt Limpar
it Pulizia
nl Reinigen
sv Rengöring
da Rengøring

no Rengjøring
el Καθαρισμός
pl Czyszczenie
cs Čistění
sk Čistenie
ro Curățarea
ru Очистка
uk Очищення



de Stromschlaggefahr!
en Risk of electric shock!
fr Risque de choc électrique!
es ¡Peligro de electrocución!
pt Perigo de choque eléctrico!
it Pericolo di scossa elettrica!
nl Gevaar van elektrische schok!
sv Risk för elektrisk stöt!
da Fare for elektrisk støt!
no Fare for elektrisk støt!
el Κίνδυνος ηλεκτροπληξίας!

pl Niebezpieczeństwo porażenia prądem!
cs Nebezpečí úrazu elektrickým proudem!
sk Nebezpečenstvo zasiahnutia elektrickým prúdom!
ro Pericol de electrocutare!
ru Опасность поражения током!
uk небезпека ураження електричним струмом!

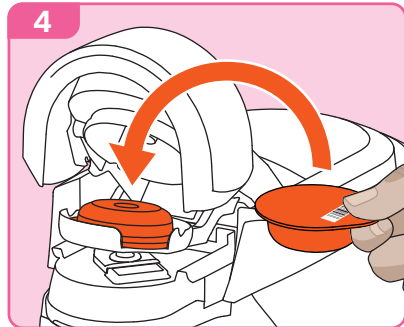
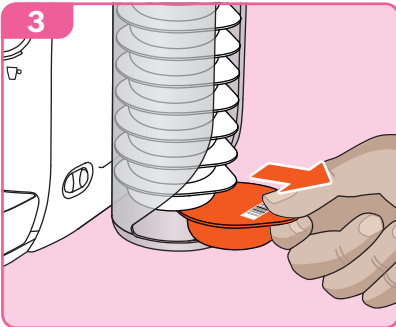
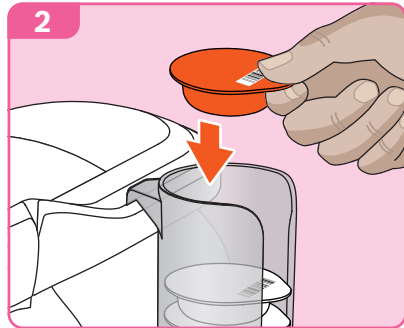
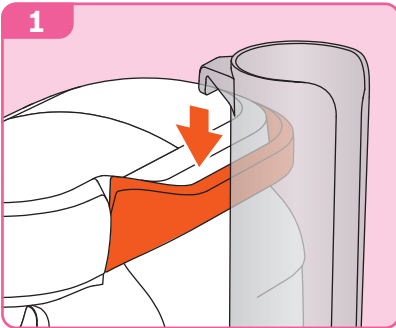
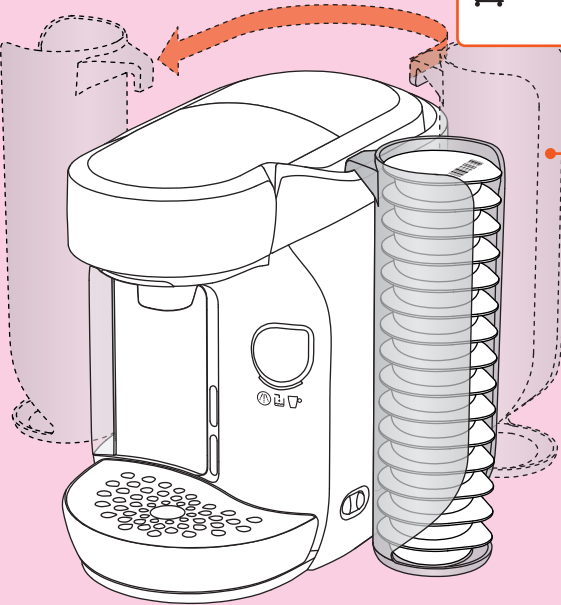


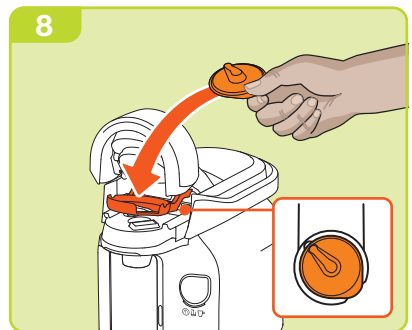
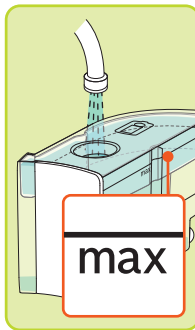
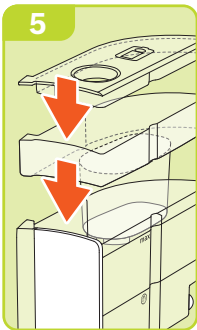
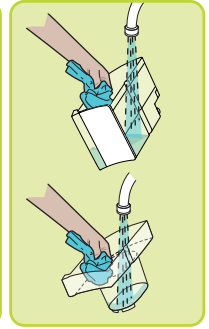
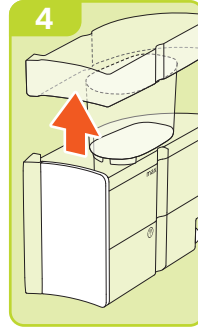
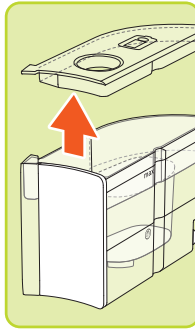
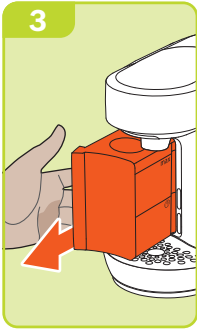
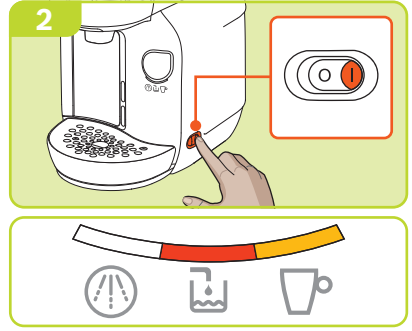
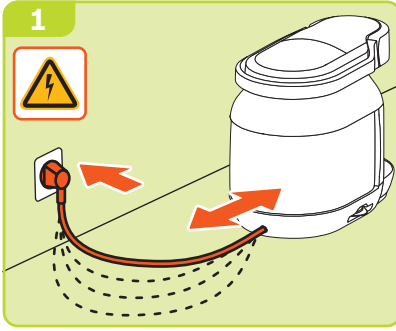
de Verbrennungsgefahr!
en Risk of burns!
fr Risque de brûlure!
es ¡Peligro de quemaduras!
pt Perigo de queimadura!
it Pericolo di ustioni!
nl Verbrandingsgevaar!
sv Brännskaderisk!
da Fare for forbrænding!

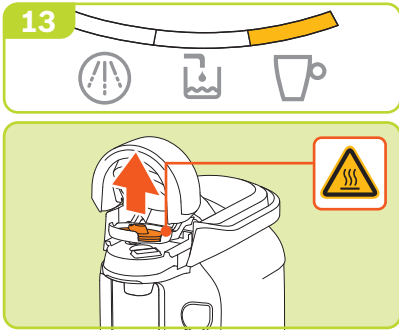
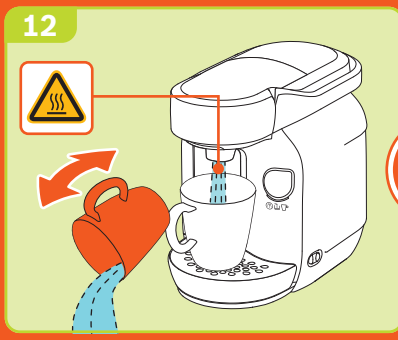
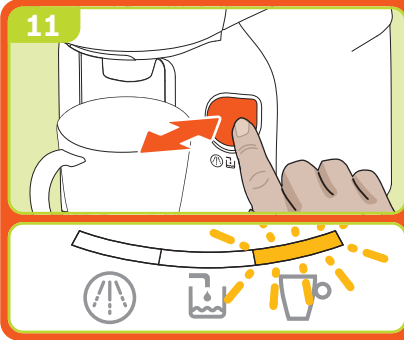
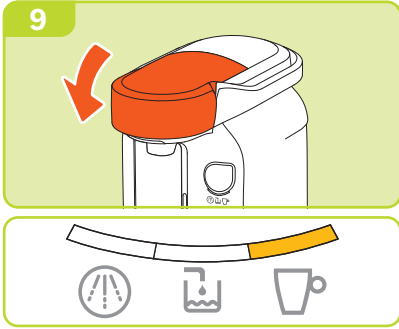
no Fare for forbrenning!
el Κίνδυνος εγκαυμάτων!
pl Niebezpieczeństwo poparzenia!
cs Nebezpečí opraření!
sk Nebezpečenstvo oparenia!
ro Pericol de arsuri!
ru Риск получения ожогов!
uk небезпека опшарення!

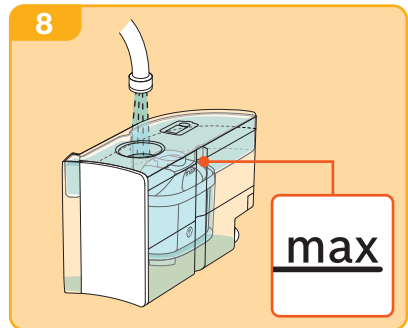
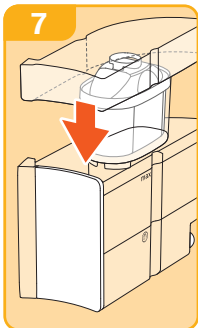
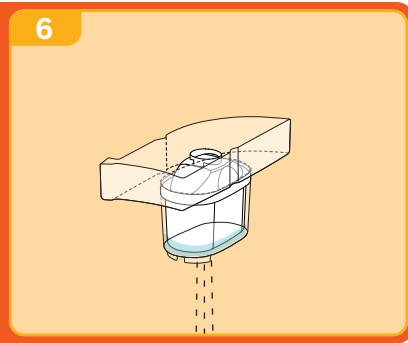
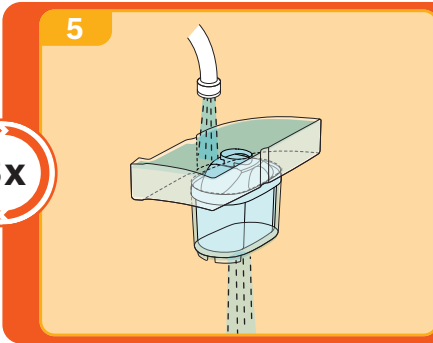
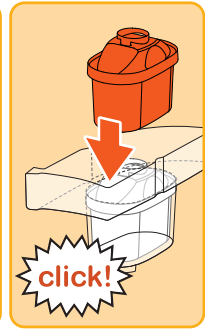
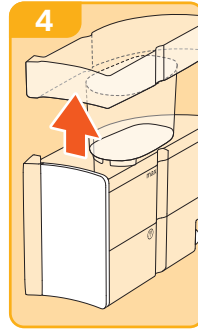
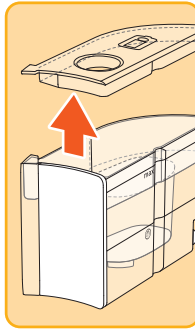
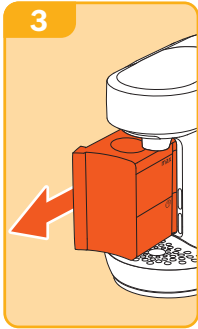
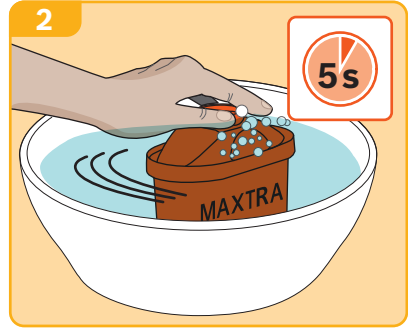
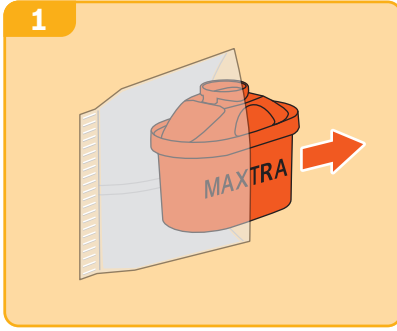


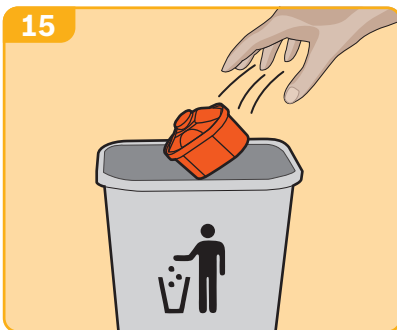
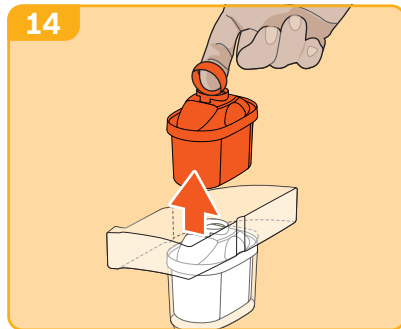
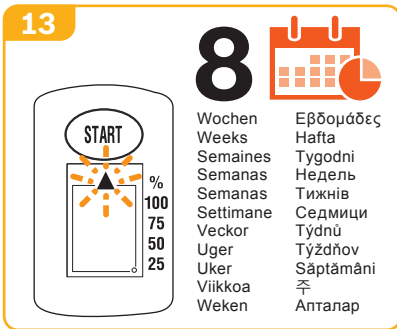
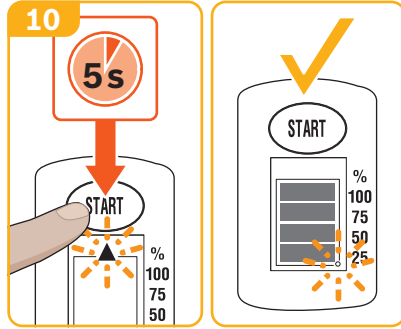
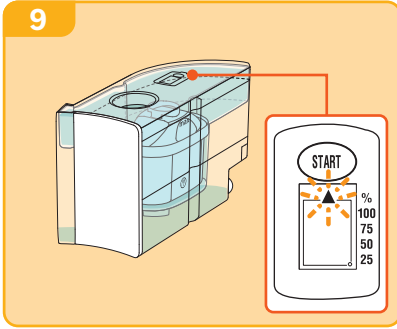
 bosch-home.com
tassimo.com
№ TCZ7000

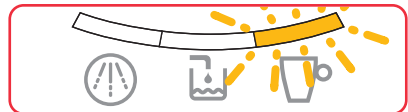
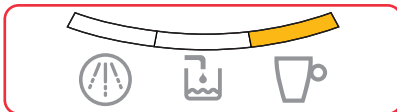
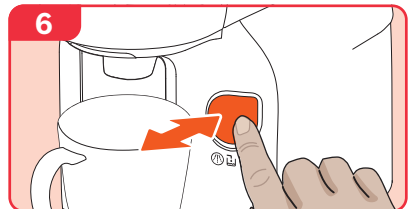
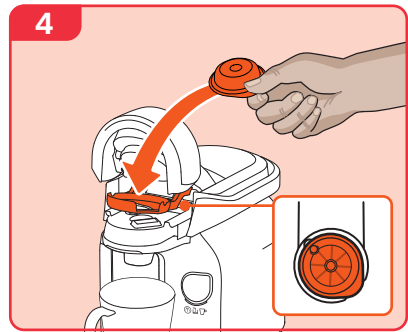
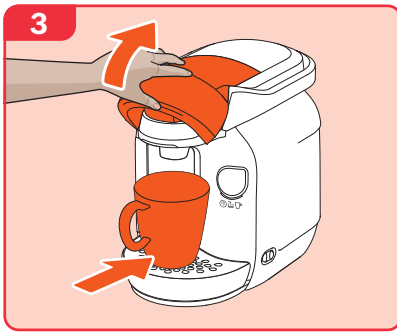
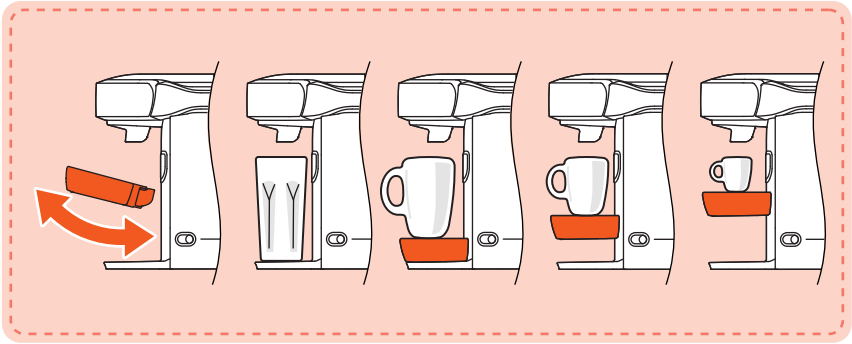
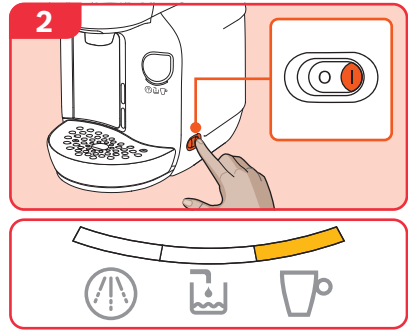
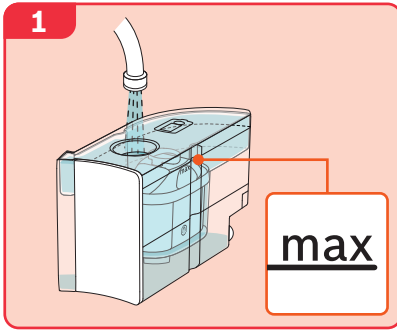


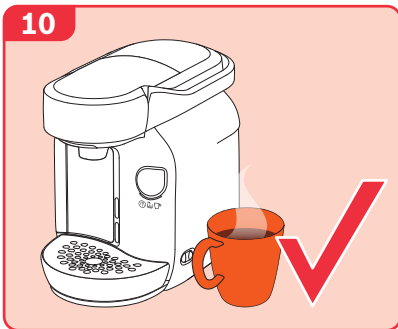
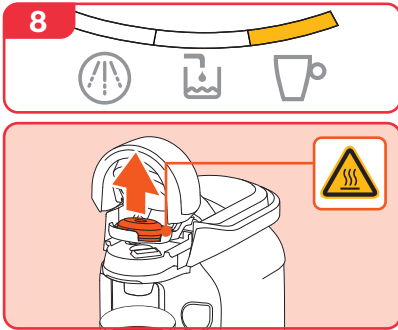
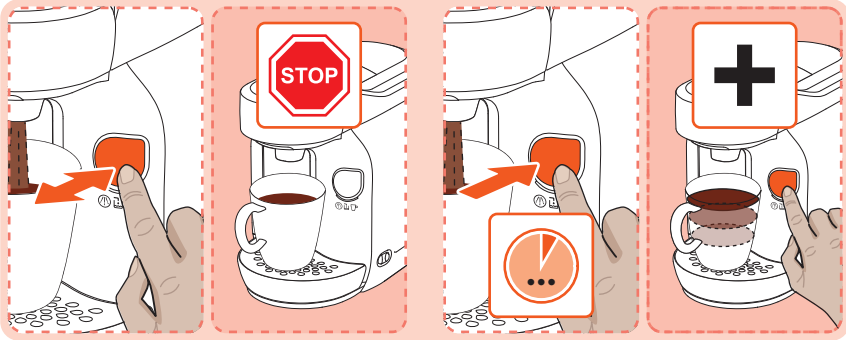
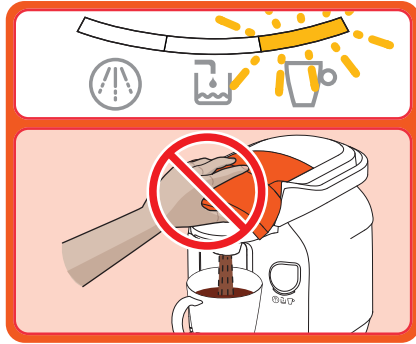
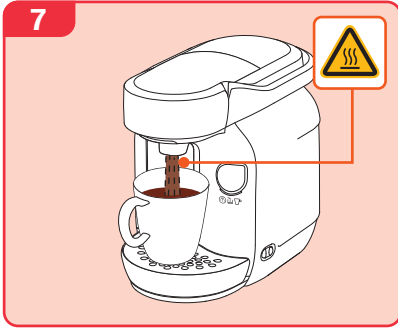


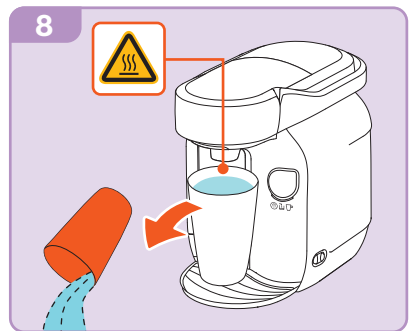
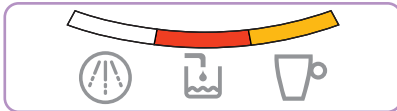
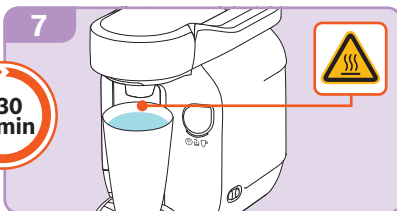
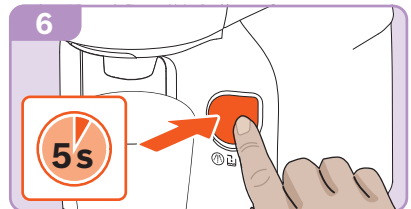
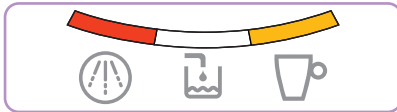
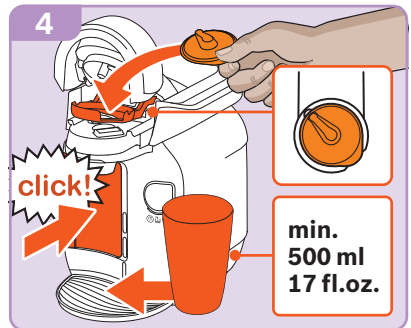
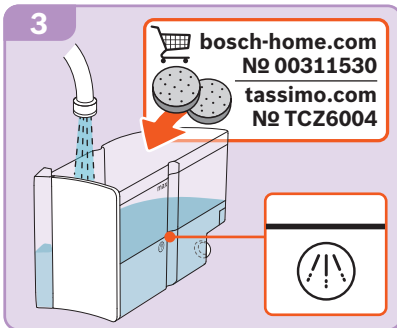
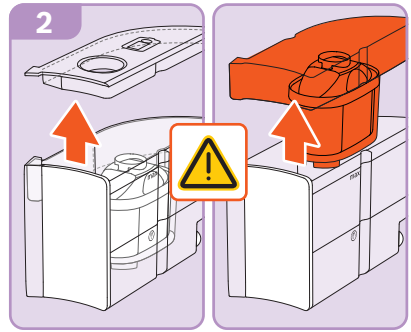
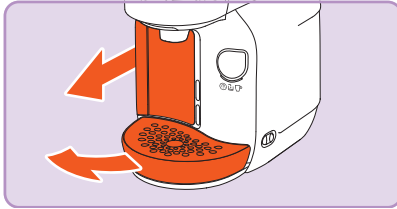
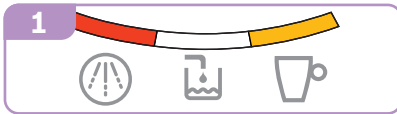


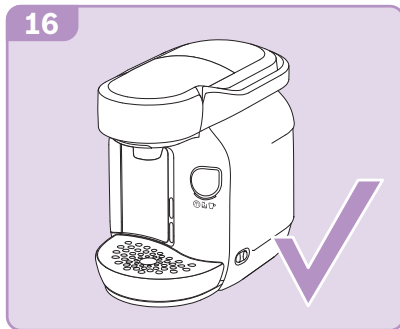
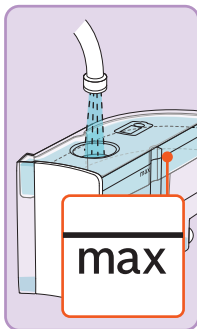
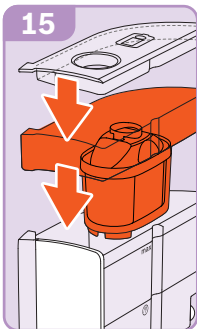
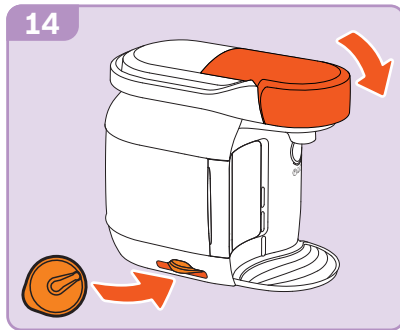
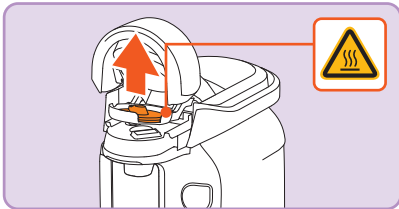
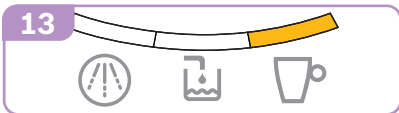
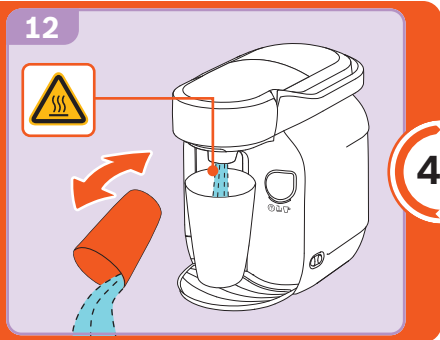
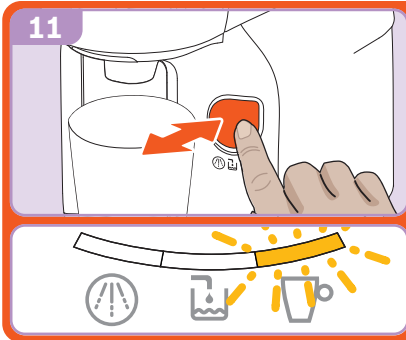
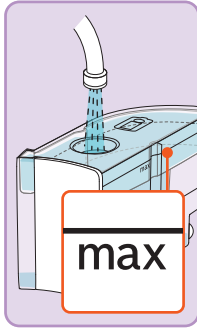
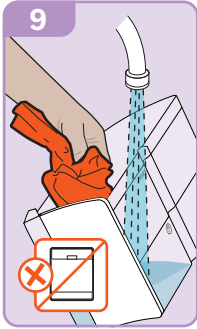


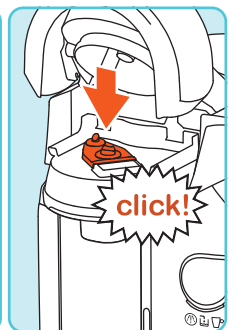
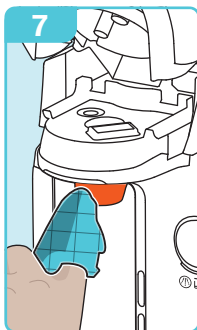
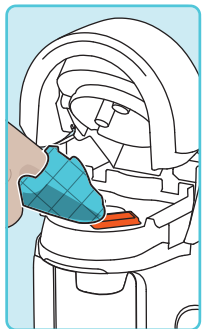
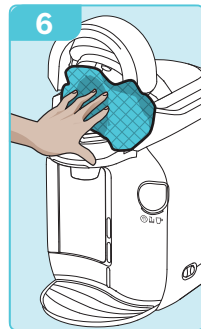
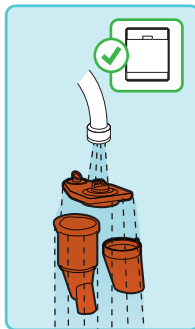
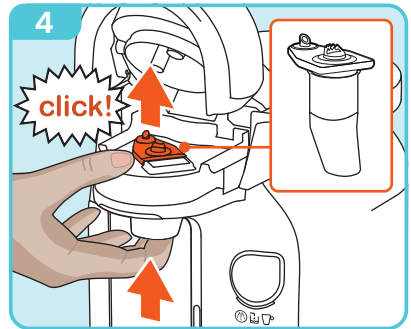
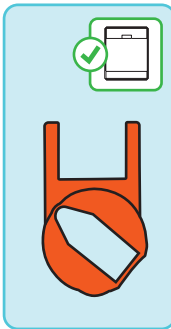
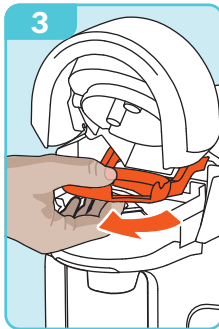
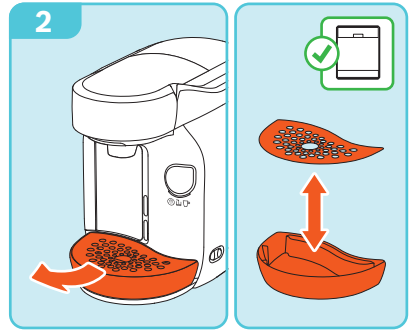
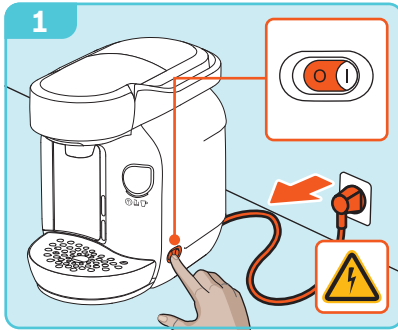


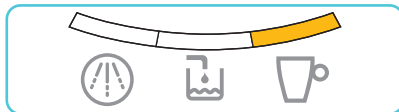
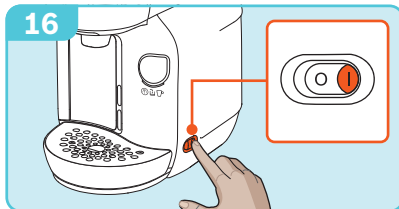
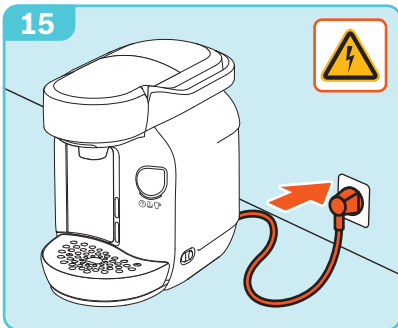
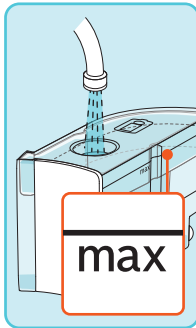
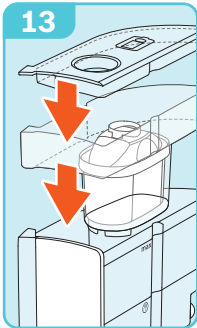
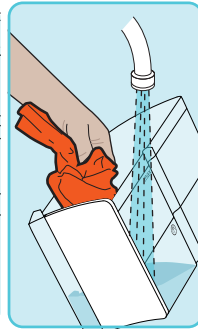
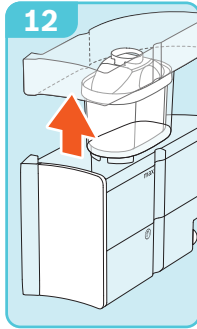
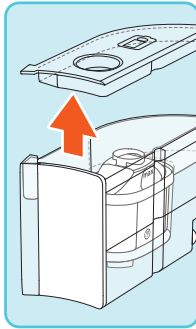
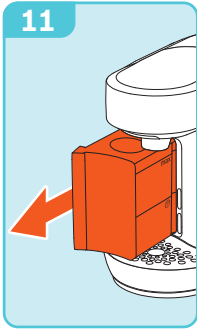
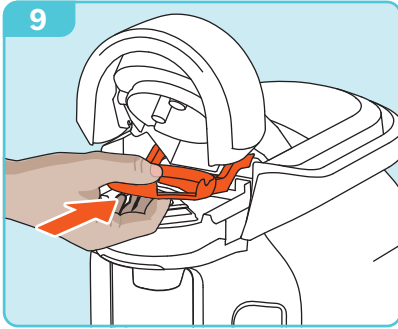


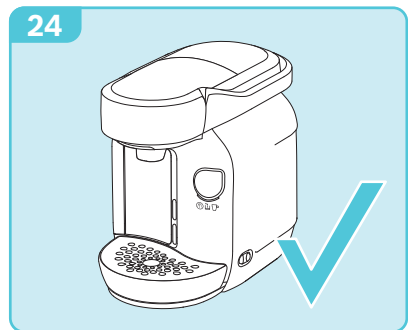
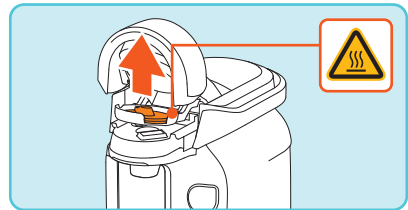
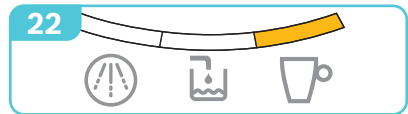
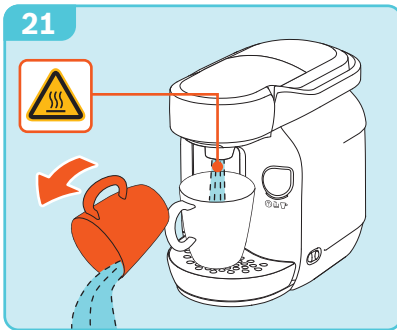
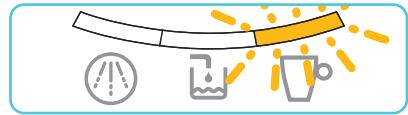
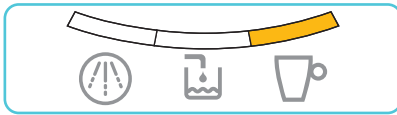
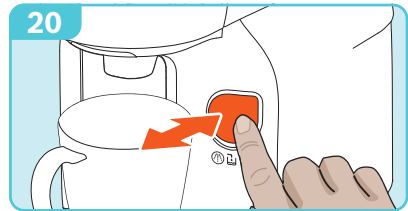
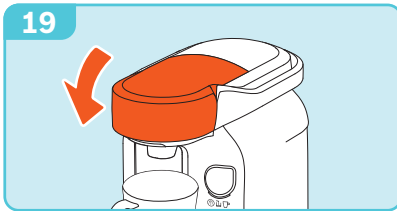
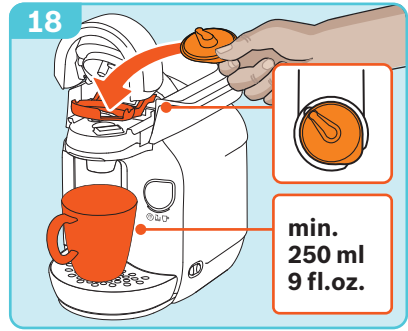












- de** Beachten Sie unbedingt die Sicherheitshinweise in der beiliegenden Gebrauchsanleitung – Teil 1! Dort finden Sie auch detaillierte Informationen zum Gebrauch, Garantiehinweise und Kontaktadressen.
- en** Always follow the safety instructions in the included manual part 1! You will also find detailed information regarding Care and Use, Warranty and Contact information for Customer Service.
- fr** Suivez toujours les consignes de sécurité fournies dans la partie 1 de ce manuel. Vous trouverez également des informations sur l'entretien, l'utilisation, les conditions de garantie et les coordonnées du service client.
- es** Lea atentamente estas instrucciones de uso y la información adjunta antes de utilizar la máquina. También encontrará información detallada referente al uso, garantía y direcciones de contacto.
- pt** Respeite impreterivelmente os avisos de segurança que se encontram na parte 1 das instruções de serviço fornecidas! Encontrará também informações detalhadas a respeito da utilização, garantia e informações de contacto.
- it** Seguire sempre le avvertenze di sicurezza nelle istruzioni per l'uso allegate – Parte 1! È inoltre possibile trovare informazioni dettagliate sull'uso, informazioni sulla garanzia e indirizzi di contatto.
- nl** Neem altijd de veiligheidsaankwijzingen uit deel 1 van de meegeleverde gebruiksaanwijzing in acht! In deze gebruiksaanwijzing vindt u tevens gedetailleerde informatie over het gebruik en de garantie, evenals contactadressen.
- sv** Beakta säkerhetsanvisningarna i del 1 i den bifogade bruksanvisningen. Där hittar du också detaljerade informationer om användningen, garantin och kontaktadresser.
- da** Følg under alle omstændigheder sikkerhedsanvisningerne i den vedlagte brugsanvisning – del 1! Her finder du også detaljer om brug, garantioplysninger og kontaktadresser.
- no** Følg alltid instruksjonene i den vedlagte bruksanvisningen – del 1! Der finner du også detaljert informasjon om bruk, garantivilkår og kontaktadresser.
- el** Προσέξτε οπωσδήποτε τις υποδείξεις ασφαλείας στις συνημμένες οδηγίες χρήσης – μέρος 1! Εκεί θα βρείτε επίσης λεπτομερείς πληροφορίες για τη χρήση, υποδείξεις εγγύησης και διευθύνσεις επικοινωνίας.
- pl** Należy koniecznie przestrzegać instrukcji bezpieczeństwa w dołączonej instrukcji obsługi – część 1! Można znaleźć tam również szczegółowe informacje na temat użytkowania urządzenia, gwarancji oraz adresy kontaktowe.
- cs** Vždy dbejte bezpečnostních pokynů uvedených v přiloženém návodu k použití – část 1! Zde najdete také podrobné informace týkající se použití, záruční podmínky a kontaktní adresy.
- sk** Venujte bezpodmienečne pozornosť bezpečnostným pokynom uvedeným v priloženom návode na použitie – časť 1! Tu nájdete aj podrobné informácie o používaní, záručné podmienky a kontaktné adresy.
- ro** Vă rugăm să respectați obligatoriu instrucțiunile de siguranță prezentate în instrucțiunile de utilizare atașate - partea 1! Acolo găsiți informații detaliate cu privire la utilizare, indicații referitoare la garanție și date de contact.
- ru** Обязательно соблюдайте указания по технике безопасности, которые приведены в части 1 инструкции по эксплуатации! В инструкции Вы найдете подробную информацию об использовании и гарантии, а также контактные данные.
- uk** Обов'язково дотримуйтеся вказівок з техніки безпеки в доданій інструкції з експлуатації – частина 1! Там міститься також детальна інформація щодо використання, вказівки про гарантію та контактні адреси.



Robert Bosch Hausgeräte GmbH
Carl-Wery-Straße 34
81739 München, GERMANY
www.bosch-home.com

8001 013 812 – 06/15