

# IN SEARCH OF INCREDIBLE

## Quick Start Guide

دليل التشغيل السريع

Кратко упу̀тване за бърз старт

*Stručná příručka*

Quick Start-vejledning

Snelstartgids

Lühijuhend

راهنمای شروع سریع

Guide de démarrage rapide

Pikakäynnistysopas

Schnellstarthilfe

Οδηγός γρήγορης έναρξης

Beüzemelési útmutató

Guida Rapida

Panduan Ringkas

クイックスタートガイド

Жылдам іске қосу нұсқаулығы

빠른 시작 설명서

Greitos darbo pradžios vadovas

Ísa pamācība

Hurtigstartsveiledning

Guia de consulta rápida

Instrukcja szybkiej instalacji

Краткое руководство

Ghid de pornire rapidă

Guía de inicio rápida

Vodič za brzo korišćenje

Stručný návod na spustenie

Snabbstartsguide

คู่มือเริ่มตัวอย่างเร็ว

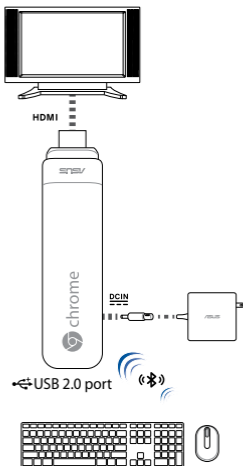
Hızlı Başlatma Kılavuzu

Hồõùng daãn khôõi ñoãng nhanh

Are you using this device for Digital Signage? If so, go to [google.com/work/chrome/signage/chromebit](http://google.com/work/chrome/signage/chromebit) for more information.



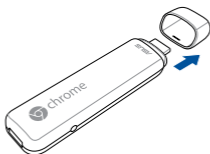
# Getting started



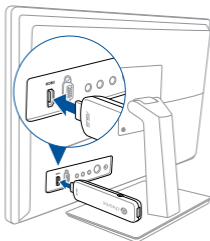
## NOTE:

- For best performance, operate at 1°C – 35°C.
- Any peripheral over 500 mA current draw should be connected via a powered USB hub, and not directly to the USB port.
- Ensure that your Chromebit does not block any of the air vents on your monitor display.
- Place your Chromebit or powered USB hub near the side of your monitor to ensure that wireless signals are not obstructed.
- Illustrations for reference only.
- USB hub, keyboard and mouse are not included.
- Visit our multi-language web site at <http://support.asus.com>

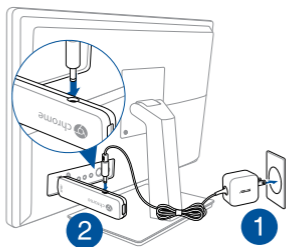
## Connecting Chromebit



1. Remove the cap.

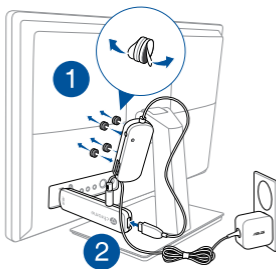


2. Plug your Chromebit into an HDMI port.

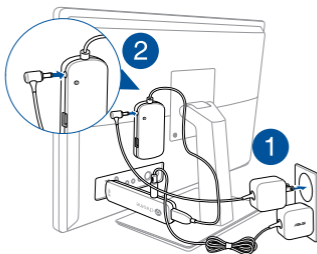


3. Connect the power into your Chromebit.

## Connecting USB Hub

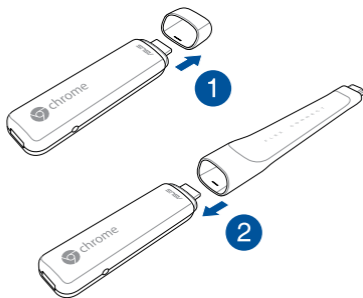


1. Stick your USB Hub to your monitor with the hook and loop sticker set, then connect your USB Hub into your Chromebit.



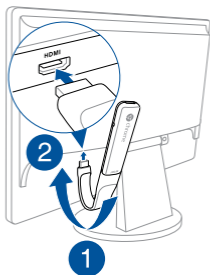
2. Connect the power into your USB Hub.

## Connecting HDMI flex connect cable

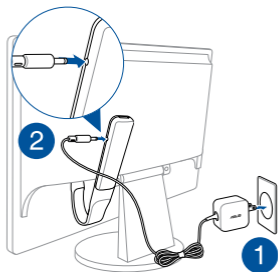


1. Remove the cap, then connect your HDMI flex connect cable.





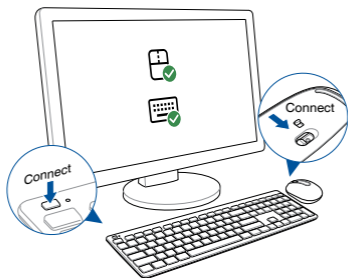
2. Adjust the HDMI flex connect cable, then plug your Chromebit into an HDMI port.



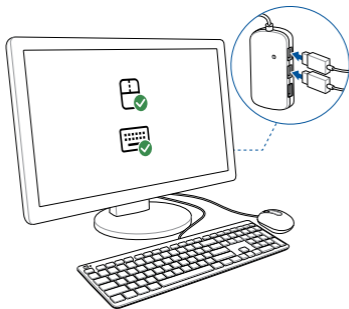
3. Connect the power into your Chromecast.

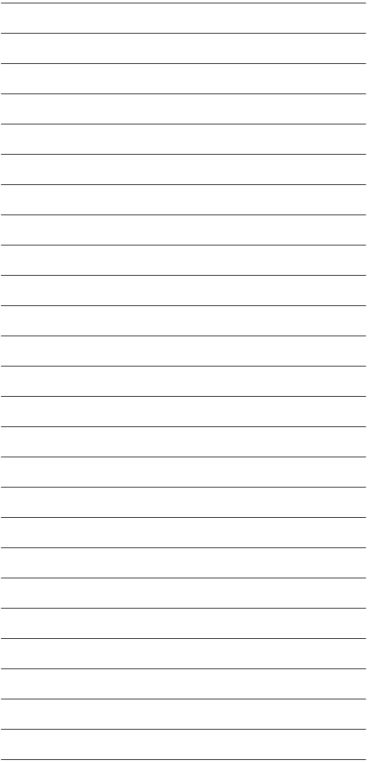
## Connecting keyboard and mouse

### Bluetooth keyboard and mouse



## USB Hub with wired keyboard and mouse





# ASUS Contact Information

## ASUSTeK COMPUTER INC.

<b>Address</b>	15 Li-Te Road, Peitou, Taipei, Taiwan 11259
<b>Telephone</b>	+886-2-2894-3447
<b>Fax</b>	+886-2-2890-7798
<b>E-mail</b>	info@asus.com.tw
<b>Website</b>	<a href="http://www.asus.com">http://www.asus.com</a>

### Technical Support

<b>Telephone</b>	+86-21-3429911
<b>Fax</b>	+86-21-58668722, ext. 9101#
<b>Online support</b>	<a href="http://support.asus.com/techserv/techserv.aspx">http://support.asus.com/techserv/techserv.aspx</a>

## ASUS COMPUTER INTERNATIONAL (America)

<b>Address</b>	800 Corporate Way, Fremont, CA 94539, USA
<b>Telephone</b>	+1-510-739-3777
<b>Fax</b>	+1-510-608-4555
<b>Website</b>	<a href="http://usa.asus.com">http://usa.asus.com</a>

### Technical Support

<b>Support fax</b>	+1-812-284-0883
<b>General support</b>	+1-812-282-4555
<b>Online support</b>	<a href="http://www.service.asus.com">http://www.service.asus.com</a>

## ASUS COMPUTER GmbH (Germany and Austria)

<b>Address</b>	Harkort Str. 21-23, D-40880 Ratingen, Germany
<b>Fax</b>	+49-2102-959911
<b>Website</b>	<a href="http://eu-rma.asus.com/sales">http://eu-rma.asus.com/sales</a>

### Technical Support

<b>Telephone</b>	+49-2102-5789555
<b>Support Fax</b>	+49-2102-959911
<b>Online support</b>	<a href="http://support.asus.com/techserv/techserv.aspx">http://support.asus.com/techserv/techserv.aspx</a>

# EC Declaration of Conformity



**We, the undersigned,**

Manufacturer:	ASUSTEK COMPUTER INC.
Address:	4F, No. 150, Li-Ts Rd, PEITOU, TAIPEI 110, TAIWAN
Authorized representative in Europe:	ASUS COMPUTER GmbH
Address, City:	HARKORT STR. 21-23, 40880 RATINGSCHEN
Country:	GERMANY

**declare the following apparatus:**

Product name :	Chromebit
Model name :	CS10

conform with the essential requirements of the following directives:

**2004/108/EC-EMC Directive**

<input checked="" type="checkbox"/> EN 55022:2010+A2:2011	<input checked="" type="checkbox"/> EN 55024:2010
<input checked="" type="checkbox"/> EN 61000-3-2:2006+A2:2009	<input checked="" type="checkbox"/> EN 61000-3-3:2008
<input checked="" type="checkbox"/> EN 55013:2007+A1:2009+A2:2009	<input checked="" type="checkbox"/> EN 55025:2007+A11:2011

**1999/5/EC-R&TTE Directive**

<input checked="" type="checkbox"/> EN 302 220 V1.8.1(2012-08)	<input checked="" type="checkbox"/> EN 301 488-1 V1.8.2(2011-08)
<input checked="" type="checkbox"/> EN 302 440-1 V1.8.1(2010-08)	<input checked="" type="checkbox"/> EN 301 488-3 V1.4.1(2002-08)
<input checked="" type="checkbox"/> EN 302 440-2 V1.4.1(2010-08)	<input checked="" type="checkbox"/> EN 301 488-4 V1.4.1(2009-08)
<input checked="" type="checkbox"/> EN 301 511 V8.2(2009-03)	<input checked="" type="checkbox"/> EN 301 488-7 V1.3.1(2009-11)
<input checked="" type="checkbox"/> EN 301 808-1 V5.2.1(2011-05)	<input checked="" type="checkbox"/> EN 301 488-8 V1.4.1(2007-11)
<input checked="" type="checkbox"/> EN 301 808-2 V5.2.1(2011-07)	<input checked="" type="checkbox"/> EN 301 488-17 V2.2.1(2010-08)
<input checked="" type="checkbox"/> EN 301 883 V1.2.1(2012-08)	<input checked="" type="checkbox"/> EN 301 488-24 V1.3.1(2010-08)
<input checked="" type="checkbox"/> EN 302 544-2 V1.1.1(2009-01)	<input checked="" type="checkbox"/> EN 302 558-2 V1.2.2(2007-08)
<input checked="" type="checkbox"/> EN 302 622 V1.1.1(2009-01)	<input checked="" type="checkbox"/> EN 302 558-3 V1.3.1(2007-08)
<input checked="" type="checkbox"/> EN 50360:2001	<input checked="" type="checkbox"/> EN 301 357-2 V1.4.1(2008-11)
<input checked="" type="checkbox"/> EN 50476:2010	<input checked="" type="checkbox"/> EN 302 287-1 V1.1.1(2009-07)
<input checked="" type="checkbox"/> EN 50368:2002	<input checked="" type="checkbox"/> EN 302 287-2 V1.1.1(2009-07)
<input checked="" type="checkbox"/> EN 62311:2008	<input checked="" type="checkbox"/> EN 50568:2013

**2006/95/EC-LVD Directive**

<input type="checkbox"/> EN 60950-1: 2006 / A12: 2011	<input checked="" type="checkbox"/> EN 60950:2002 / A12: 2011
<input type="checkbox"/> EN 60950-1: 2006 / A2: 2013	

**2009/128/EC-EP Directive**

<input checked="" type="checkbox"/> Regulation (EC) No. 1275/2008	<input checked="" type="checkbox"/> Regulation (EC) No. 278/2009
<input type="checkbox"/> Regulation (EC) No. 642/2009	<input type="checkbox"/> Regulation (EU) No. 617/2013

**2011/65/EU-REACH Directive**

Ver. 140224

**CE marking**



(EC conformity marking)

Position : **CEO**  
Name : **Jerry Shan**

  
Signature : \_\_\_\_\_

Declaration Date: 31/08/2015  
Year to begin affixing CE marking: 2015

## DECLARATION OF CONFORMITY

Per FCC Part 2 Section 2. 1077(a)



**Responsible Party Name:** Asus Computer International  
**Address:** 800 Corporate Way, Fremont, CA 94539.  
**Phone/Fax No:** (510)739-3777/(510)608-4555

hereby declares that the product

**Product Name :** Chromebit  
**Model Number :** CS10

Conforms to the following specifications:

- FCC Part 15, Subpart B, Unintentional Radiators

**Supplementary Information:**

This device complies with part 15 of the FCC Rules. Operation is subject to the following two conditions: (1) This device may not cause harmful interference, and (2) this device must accept any interference received, including interference that may cause undesired operation.

Representative Person's Name : Steve Chang / President

  
Signature :

Date : Aug. 31, 2015



[support.asus.com](https://support.asus.com)



1 5 0 6 0 - 6 8 5 3 0 0 0 0