

AMBERGLO

USER MANUAL



AGL078

AmberGlo Matte Black Bio Ethanol Round Stove

Thank you for choosing our bio-ethanol stove.
Please read this manual before using or installing these and keep it
safe for future reference.

CONTENTS

SAFETY WARNINGS	3
INTRODUCTION TO BIO-ETHANOL	5
DIMENSIONS	6
PARTS	6
PLACEMENT	6
INSTALLATION	7
OPERATION	7
CLEANING AND CARE	8
TROUBLESHOOTING	9
TECHNICAL SPECIFICATION	9
SUPPORT	9

SAFETY WARNINGS

IMPORTANT: READ ALL INSTRUCTIONS BEFORE USE. FAILURE TO FOLLOW THESE SAFETY PRECAUTIONS MAY RESULT IN FIRE, INJURY, OR DAMAGE TO PROPERTY.

- This appliance is for decorative and domestic use only. It is not intended for commercial applications.
- Do not use this appliance for heating or boiling water or as a cooking appliance.
- This is not intended to be a household's primary source of heating.
- This appliance is not suitable for continuous operation.
- Do not use any fuel other than what is recommended by the manufacturer in this manual.
- Operate this appliance only in rooms that meet the ventilation and size requirements outlined in the manual.
- Read the operating instructions carefully before installation and use.
- Do not put anything on top of the appliance.
- Keep away from children and pets. Do not leave them unattended.
- Ensure the surface where the item is placed, positioned, or installed can bear the weight of the appliance.
- Install only in a location protected from draught or cross-ventilation.
- Ensure you avoid creating draughts in the room where the appliance is situated.
- Do not install the appliance near unsecured items, especially curtains, as these could easily catch fire.
- Do not cover or obstruct the air slots or rear ventilation.
- Do not put any flammable items on top of the appliance.
- Do not store any combustible or flammable goods close to the appliance.
- Do not store or place anything around the burner unless recommended by the manufacturer.
- Due to high surface temperatures, children, pets, clothing, and furniture must be kept away.
- Never store or transport the fuel in anything other than one that is suitable for use with the specified fuel in accordance with the Consumer Chemicals and Containers Regulations 2001 or is the original container for the specified fuel.
- Never use the appliance where flammable vapours or gas may be present.
- Never move the appliance during operation.
- Do not hang from, lean on or apply extra weight to the appliance.
- Always observe the local legislation when placing, installing and using the appliance.
- Only use the appliance in an adequately ventilated room.
- DO NOT ignite the appliance if it is still hot.
- Do not smoke while handling the fuel.
- Never refill the fuel during operation, as it poses a severe fire and injury risk.
- Do not overfill the burner beyond the maximum level.
- Do not insert anything in the burner other than the fuel prescribed by this manual.
- Do not make any changes or amend the structure of the appliance.
- Do not modify the structure of the appliance or use parts not approved by the manufacturer.
- Ensure adequate ventilation. Use only in a room of at least 44 m³ and with airflow to avoid indoor air pollution.
- Risk of indoor air pollution: Only use in well-ventilated areas with adjacent doors open.
- Do not obstruct airflow to the burner.
- People with breathing problems should consult a physician before using an ethanol fireplace.
- Accessible parts may become hot during use. Do not touch.
- Regularly check the secondary containment chamber for any fuel overspill and empty it before refueling.
- Ensure no liquid fuel is present outside of the burner compartment, as this could lead to a potential fire risk. Any overspill shall be removed before lighting the appliance.
- The overspill must be removed with an absorbent tissue and cleaned with water to prevent ignition outside the burner reservoir.
- Spilled alcohol may lead to matt stains on parquet flooring.

- Never leave the appliance unattended while in operation.
- Only use bioethanol fuel as specified by the manufacturer. Never use gasoline or other fuels.
- Using a fuel source other than specified in the manual may damage the item and void the warranty. This could also result in a fire.
- Fuel shall be stored in a fire-safe area at least 1 metre away from the fireplace and at room temperature for ease of facilitating ignition.
- In case of deterioration or accident due to negligence, damages caused by failing to maintain and service the appliance or any modification of the item will result in the warranty being void.
- The warranty does not cover the appliance if subject to abnormal use or other than intended use.
- Any flammable or combustible material should be kept at least 1 metre (40 inches) away from the fireplace.
- Maintain a minimum clearance of 2 metres (80 inches) from any window or curtain.
- Do not leave unburned fuel in the burner for prolonged periods; allow it to burn completely before refuelling.
- Never extinguish the flame with water; if possible, let the fuel burn out completely or use the supplied flame extinguisher. This prevents alcohol from remaining in the reservoir and deflagration when reigniting.
- Only extinguish the burner through the use of the flame controller.
- Do not use your hand or any object other than the supplied flame controller to close the burner or adjust airflow.

THIS APPLIANCE HAS NOT BEEN TESTED WITH DOORS OR AN UNVENTED GAS LOG SET. TO REDUCE THE RISK OF FIRE OR INJURY, DO NOT INSTALL DOORS OR AN UNVENTED GAS LOG SET INTO THIS APPLIANCE.

This item is compliant with EN 16647.



Do not fill fuel into the open flame or hot burner.



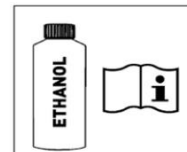
Do not position near combustible items.



Do not touch the flames.



Keep suitable extinguishing agent ready.



Adhere to instructions about fuel.



Use fire blanket in case of fire.



No smoking near appliance.



Do not put objects on the fire.



Do not touch the flames.



WARNING: FLAMMABLE MATERIAL



Protect fire against draft.



Never fan the fire.



Health Hazard.

UNPACKING THE APPLIANCE

- Unpack the appliance and accessories.
- Check that all parts are complete and that no damages have been incurred within transit.
- Keep children and pets away from packaging.

CARBON DIOXIDE WARNING

IMPORTANT: Failure to abide by the room size and ventilation requirements can cause the fire to consume all of the oxygen in the room and replace this with carbon dioxide.

Carbon dioxide can kill. All heating appliances fuelled by bio-ethanol can cause carbon dioxide poisoning, with the proper airflow, this is extremely rare. Poor ventilation is generally the cause of carbon dioxide poisoning.

Symptoms of carbon dioxide poisoning include:

- Headache
- Dizziness or tiredness.
- Pins and needles or tingling.
- Sweating.
- Increased heart rate and BP.
- Shortness of breath

The symptoms may come and go. They may worsen when you spend time in an affected room or building and get better when you leave or go outside.

You can reduce the risk of carbon dioxide poisoning by:

- Ensuring that the ventilation provisions are adequate for the room and the appliance – The requirements within this manual must be followed.
- Ensuring the appliance is operated in accordance with the manual.
- Where ventilation is necessary, ensure it is operational whilst the appliance is in operation.
- Ensuring that the maintenance advice within this manual is followed to keep the appliance operating efficiently and safely.
- Ensuring that the appliance is not modified.
- Install a carbon dioxide alarm in every room where an appliance is present and ensure it is tested regularly.

The provision of an alarm must not be considered a substitute for installing the appliance correctly or ensuring regular maintenance of the appliance.

If you think you might have carbon dioxide poisoning:

- Stop using appliances you think might be making carbon dioxide if you can.
- Open any windows and doors to let fresh air in.
- Go outside.
- Get medical advice as soon as possible – do not return to the affected building until you have advice.

INTRODUCTION TO BIOETHANOL

Bioethanol is a renewable, eco-friendly fuel derived from plant-based sources such as sugarcane, corn, and other biomass. It is clean-burning and produces no harmful emissions, making it an excellent alternative to traditional fuels.

When burned, bioethanol produces heat, water vapour, and carbon dioxide, similar to human respiration. As a result, bioethanol fireplaces do not require a chimney, flue, or gas connection, making them easy to install and use in various indoor settings.

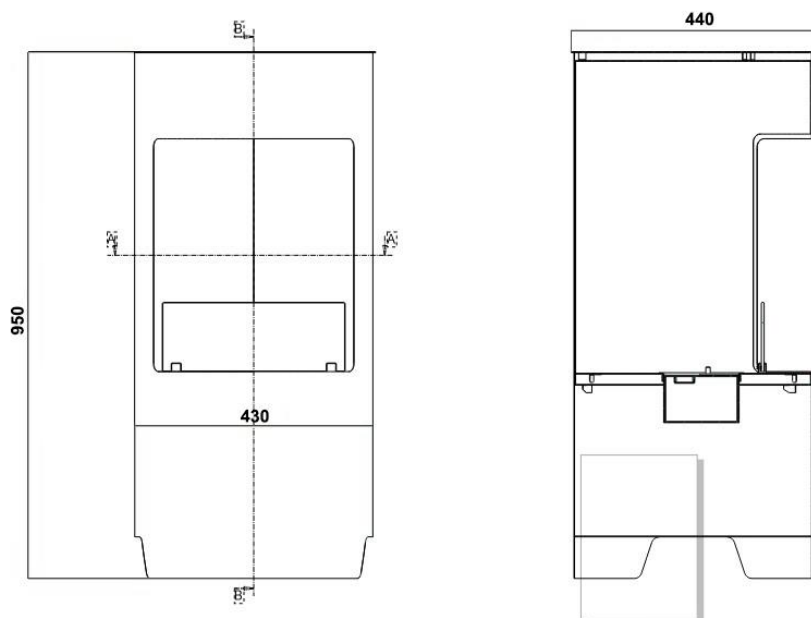
Bioethanol fireplaces are designed for decorative and domestic use and provide a real flame effect without the need for wood, gas, or electricity. However, as with any open-flame appliance, proper usage and safety precautions must be followed to ensure safe operation.

BENEFITS OF USING A BIO-ETHANOL BURNER

- **Bioethanol is kinder to the environment than traditional fuels.** It is a sustainable fuel that emits no smoke and the approximate CO² as two lit candles.
- **Easy Installation** - No chimney, flue, or gas connections are required.
- **Real Flame Effect** - Provides the ambience of a traditional fireplace without ash, soot, or residue.
- **Flexible Placement** - Can be used in various locations within a home, provided adequate ventilation is ensured.
- **Minimal Maintenance** - No need for regular cleaning of soot or ash.

DIMENSIONS

NOTE: All images are for illustrational purposes only and may be subject to change due to continual improvement of the item. All measurements are in mm.



PARTS INCLUDED

DESCRIPTION	QTY
Burner tray	1
Burner	1
Burner cover	1
Glass divider	1
Flame controller	1

PLACEMENT

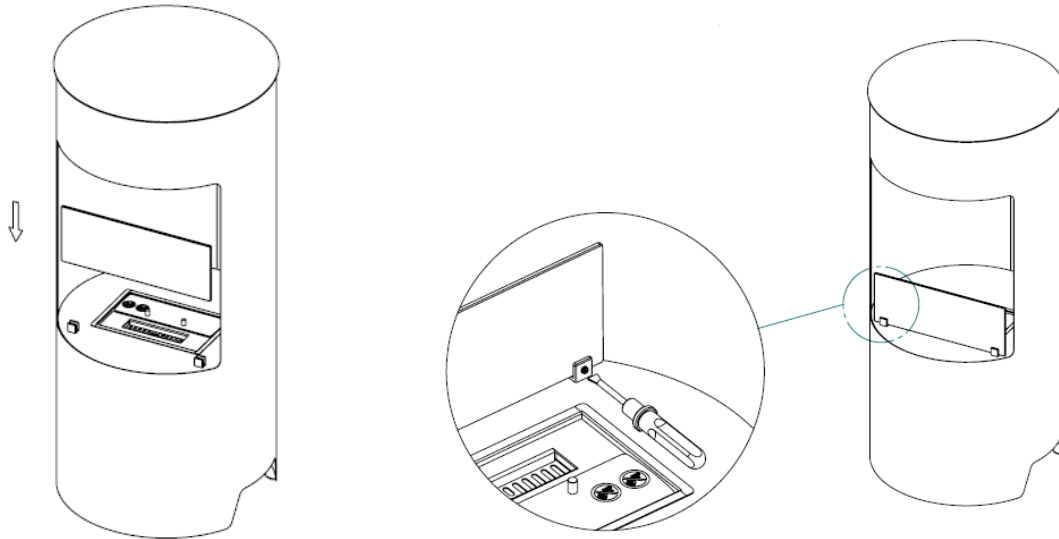
- Ensure this appliance is installed away from combustible material or draughts.
- Ensure the appliance is level and stable.
- Ensure the surface where the item is placed, positioned, or installed can bear the weight of the appliance.
- The appliance should be placed on non-flammable flooring or a non-flammable mat (not provided).
- Any flammable material should be kept at least 1 metre (40 inches) away from the fireplace.
- A safety distance of at least 2 metres (80 inches) should be kept from any window or curtain.
- Ensure reasonable ventilation in the room this will be placed as burned ethanol emits water vapour and carbon dioxide.
- Ensure this is not installed in a bathroom, small room or any room where sleeping accommodation is provided.
- Do not install this in a room where less than 44m³ (1550ft³) of air space is provided.

INSTALLATION

NOTE: Please read all the safety warnings and the before-installation section before deciding where to place the bio-ethanol stove.

Once you have placed this in a suitable area for use, place the burner tray inside the appliance and the burner atop it. Fit the lid on the burner.

Loosen the two screws on the glass holder, position the glass divider in place, and securely fasten it by tightening the screws.



OPERATION

REFILLING THE BURNER

IMPORTANT: The fuel is not provided; you will need to purchase fuel. Only purchase bio ethanol fuel, which is explicitly intended for bioethanol fires.

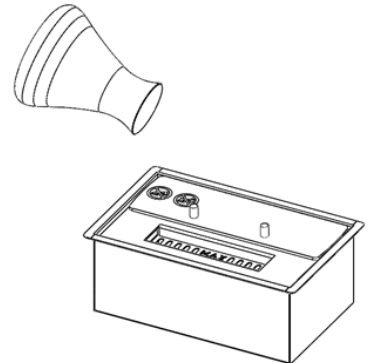
Ensure the burner is off and cooled completely after extinguishing. Open the lid to its widest opening. Fill the burner with bio-ethanol until it reaches the bottom of the “max” line. Do not overfill or spill.

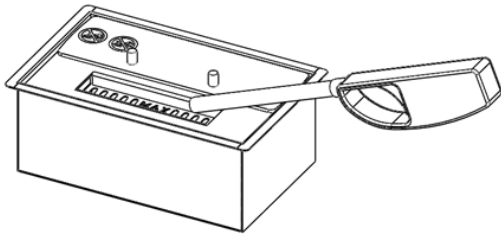
Any spilt ethanol must be immediately removed with absorbent tissue and cleaned with water to prevent ignition outside the burner reservoir.

NOTE: Never refill the burner during use.

IGNITING THE BURNER

NOTE: Ensure there is no fuel or overspill outside of the burner prior to ignition. Ensure there are no obstructions to the burner airflow and no combustible or flammable material has been placed inside the main body.





Use a long match or candle lighter to ignite the burner. Matches can be used, but you must ensure dead matches are not put into the burner.

Repeat the ignition process if the burner does not ignite until the flame burns steadily.

The flame will slowly light. Please allow 15 minutes for it to reach the normal temperature and flame height.

ADJUSTING THE FIRE

Use the flame controller to adjust the flame height and airflow. The amount of airflow will affect the speed at which the fuel is consumed. The bigger the airflow, the faster the consumption.

NOTE: Do not use your hand or any other combustible object to adjust the burner lid.

EXTINGUISHING THE FIRE

Use the flame extinguisher to cover the burner hole until the fire dies out. Alternatively, in an emergency, use the flame controller to close the lid fully in a swift motion. If the fire has not yet been extinguished, repeat the previous step.

NOTE: Never extinguish the flame with water; let the fuel burn out completely if possible. This prevents alcohol from remaining in the reservoir and deflagration when reigniting.

IMPORTANT: In the event of a fire, we recommend keeping a Class B fire extinguisher or a fire blanket close by for easy access. Always contact your local fire department in the event of a fire.

CLEANING AND CARE

The fire and all of its parts must be cleaned regularly and checked for damage or wear and tear. All cleaning and maintenance should be carried out when the burner is cooled completely.

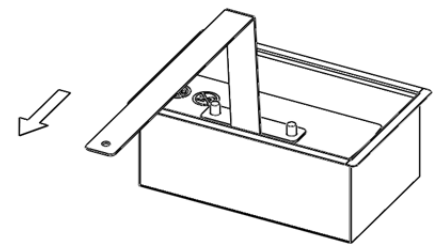
Once the fuel has burnt out, the fire and burner must be cleaned frequently with mildly warm, soapy water and a soft sponge and then dried with a soft cloth. Any marks can be removed with a soft cloth, a mixture of lukewarm water and a small amount of cleaning liquid (ph-neutral).

Regularly inspect the fire, especially the burner parts, for warping or damage. If one is damaged, stop using it and replace the part before use. Do not use abrasive powders or cleaning materials.

REMOVING THE BURNER

Once the burner is not in use and is completely cooled, you may lift it up, starting with the lid, then the burner utilising the crevice, and then the tray.

To reinsert the burner (ensuring it is completely dry), insert the burner tray, then the burner and lid.



TROUBLESHOOTING

ISSUE	POSSIBLE CAUSE	SOLUTION
The flame does not ignite.	The fuel level is too low, or incorrect fuel was used.	Refill with specified bioethanol fuel.
The flame is weak or goes out quickly.	Inadequate ventilation or fuel contamination.	Ensure adequate airflow and use clean bioethanol.
The burner emits a strong odour.	Spilt fuel or improper fuel type.	Clean spills and use only recommended fuel.
Soot or smoke is present.	Obstructed burner or poor-quality fuel.	Remove obstructions and use 95% bioethanol.
The appliance is excessively hot.	Poor ventilation or proximity to other heat sources.	Improve ventilation and ensure proper clearance.
The flame does not extinguish properly.	Faulty flame extinguisher.	Use only the supplied flame extinguisher and replace it if necessary.

TECHNICAL SPECIFICATION

MODEL	AGL078
DIMENSIONS (L x H x D)	440x950x440 mm
NET WEIGHT	22.4kg
FUEL TYPE	95% ETHANOL
MAXIMUM BURNER VOLUME	2L
FUEL CONSUMPTION	0.26 kg/h
HEAT OUTPUT	2.03 kW
SUGGESTED MINIMUM ROOM VOLUME	44 m ³
SECURITY DISTANCE	1m

SUPPORT

www.furniture123.co.uk/content/customer-services

Office hours: 9 AM - 5 PM, Monday to Friday

Buy It Direct
Unit 2A, Trident Business Park,
Neptune Way, Leeds Road,
Huddersfield, HD2 1UA.

V20250306LSE